

广东库博精密科技集团股份有限公司

GUANGDONG UNIHOPPER PRECISION TECHNOLOGY  
CROUP CO.,LTD

运营中心：广州市天河区天河路 242 号丰兴广场 B 栋 2404 室  
Operating center: Rm2404 Building B, Fengxing Plaza, No.242,  
Tianhe Rd, Tianhe District, Guangzhou City

总部：广东省肇庆市高新技术产业开发区创业路 9 号库博工业园  
Headquarter: Unihopper industrial park, No.9 Chuangye  
road, High-tech Industrial Development Zone ,Zhaoqing City,  
Guangdong Province, China

TEL: 0758-3212900/3212901  
FAX: 0758-3212902  
E-mail: sales@unihopper.biz

  
[www.unihopper.biz](http://www.unihopper.biz)

2506.5K



公众号



微官网

库博五金保留在不影响功能质量前提下，适当改动尺寸、外型而不另行通知。实际产品会因印刷原因与样本上有少许色差，产品图片尺寸误差以实物为准  
On the premise of not influence the function and uality,Grasshopper reserves the right of changing the size,outlook without notice.  
There will be a little color difference between the product in presswork and definite object.The correct size of the product subject to definite object.

# WARDROBE

Designed by UNIHOPPER

WARDROBE 衣柜五金产品手册



# WARDROBE

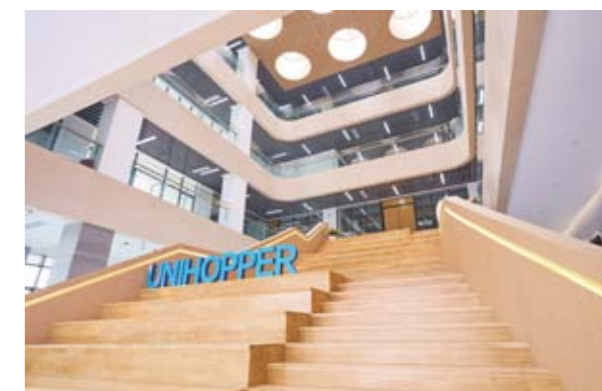
更懂**高端**家居的**五金**品牌

MORE UNDERSTANDING OF HIGH-END HOME HARDWARE BRANDS

库博衣柜五金产品手册



Unihopper Intelligent industrial park  
库博智能化工业园



Unihopper R & D Building  
库博研发大楼

# MILESTONES

品牌里程碑

2003

Unihopper launched the first generation one-way soft closing drawer box.

库博(中国)推出第一代面向全球缓冲骑马抽



2005

Unihopper decided to invest with the advanced technology from Europe and construct the production base in Foshan China.

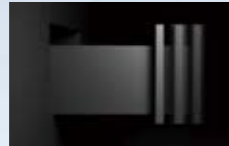
库博(中国)引进欧洲技术升级投建佛山生产基地



2007

Unihopper founded a union design group with designers from Europe and Columbia, and successfully launch the second generation two-way soft closing drawer box. The concept of two-way soft closing became popular around world ever since.

与欧洲、哥伦比亚设计师成立联合设计小组推出双缓冲骑马抽,双缓冲理念在此风靡全球



2008

Unihopper set up the marketing center and began to provide quality products and service for Chinese furniture customers.

组建营销中心  
为中国家具客户提供优质的产品和服务

2010

Unihopper successfully researched and developed the third generation interactive two-way soft closing drawer box and synchronize conceal slide.

成功研发第三代联动双缓冲骑马抽同步隐藏导轨

2013

The co-designer team successfully researched and developed basket and wardrobe storage system (MOKA).

联合设计小组成功研发拉篮、摩卡衣柜收纳系统



2015

Unihopper successfully researched and developed the fifth generation interactive two-way soft closing drawer box-Magic box, and successfully hosted the "Night of Unihopper" in Beijing wardrobe annual conference.

成功研发第五代联动双缓冲骑马抽-魔力抽并在北京衣柜年会成功举办“库博之夜”



2016

Unihopper successfully hosted "Unihopper Global summit" in Guangzhou, and announced Unihopper exported more than 90 countries.

在广州威斯汀酒店成功举办库博全球峰会,并宣布UNIHOPPER库博全球化输出超过90个国家和地区



2017

Unihopper successfully hosted the second "Unihopper Global summit". Same time, Unihopper Business College was founded.

成功举办第二届库博全球合作伙伴峰会同时库博商学院成立

2019

Unihopper successfully hosted the third "Unihopper Global summit", and founded the new Unihopper production base and Unihopper brand-day. Same year, Unihopper researched and developed the Phantom kitchen storage system and Co-box.

成功举办第三届库博全球合作伙伴峰会库博新生产基地奠基及9-9库博品牌日成立研发出魅影系列厨房收纳和魅力抽系列产品



2020

Unihopper become one of the home decoration drafting committee for Hinge, slide and basket. In the same year, Unihopper won the National High-tech Enterprise. Same year, VANKA, COKA wardrobe system have been introduced to the market.

成为全装修家居五金铰链、导轨、拉篮使用标准主起草单位  
荣获国家高新技术企业  
成功研发推出梵卡、酷卡衣帽间收纳系列



2021

Unihopper Zhaoqing production base put into use officially, in the same year, LINA, HUGGEN series have been introduced to the market.

库博(中国)肇庆产业园正式投入使用  
丽影、库格系列产品推出市场



2022

Unihopper international R&D center and the flagship showroom in the new headquarters fully open to the public, same time, Unihopper establish product R&D centre and product laboratory together with Vanke caizhu.

库博国际研发中心与新总部旗舰产品体验厅开放  
与万科采筑共建产品研发中心、产品国家实验室落成

2023

Unihopper held the first Designers Competition "Unihopper Cup", initiating the first action in the Industry by making a solid sound for the home designer in China. Same year, Venka wardrobe system gave been introduced to the market.

库博成功举办首届“库博杯”全国设计师大赛开创行业新举,为家居终端设计师发声  
岚卡系列产品推出市场



2024

Unihopper held the second Designers Competition "Unihopper Cup" successfully, in the same time, the first "Unihopper Cup" for installation skills competition was launched. Same year, MONIKA, MONA storage series products have been launched successfully.

成功举办第二届“库博杯”全国设计师大赛同年首届“库博杯”安装技能大赛启动  
成功研发推出摩尼卡、梦影等优质收纳产品



# BRIEF INTRODUCTION

## 集团介绍

Unihopper a global hardware brand with designs and cultural concepts inspired by Europe, embracing european essence to serve the Global Market, insisit in commitment to globalization. Unihopper offering the Uni-products, Uni-design, and Uni-service to every corner of the world.

After years of development, Unihopper has export business in 108 countries and regions around the world, such as Netherlands, Canada, Russia, Slovenia, Argentina, Korea, Iran, Spain, Portugal, Ireland, Saudi Arabia, Colombia, South Africa, India, Southeast Asia Regions and China HongKong, Macao and Taiwan regions and so on; and 46 of them are sole agents, and now, Unihopper has become a major suppliers for many well-known kitchen and bathroom cabinets and home brands in the world.

In 2005, Unihopper set up a production base and established a large storage center of more than 200,000 square meters in Guangdong Province in China, and the first stage of 120,000 square meters has been put into use in 2021. The automation and digitalization level of the Unihopper industrial park has led the new trend of the industry.

As one of the best name and provider for the high-end customized furniture hardware industry, Unihopper has always upheld the brand values of "European quality, Chinese price", and now, has become a leading brand popularizing in many home furnishing companies and consumers all over the world. In the future, Unihopper will increase more investment in space enlarging, strengthen multi-dimensional development including product application, intelligent scene introduction, online and offline channel integration, striving to become a hardware brand that better understands high-end home decor and the most inportant and most respected hardware manufacturers in the world.

Unihopper库博是一家设计与文化理念源于欧洲的全球化家居五金品牌，融合欧洲精髓，服务全球市场，致力于全球化发展。库博以开放的胸怀开拓全球市场，将库博的产品、文化、理念推广到世界每个角落。

经过多年的发展，Unihopper库博在荷兰、加拿大、美国、哥伦比亚、俄罗斯、斯洛文尼亚、阿根廷、韩国、伊朗、西班牙、葡萄牙、爱尔兰、沙特、哥伦比亚、南非、印度、东南亚地区以及中国港澳台地区等全球108个国家或地区有业务往来，且在46个国家设有独家代理，现已成为全球众多知名橱柜、家居品牌、地产及卫浴领域企业的主要合作伙伴。

2005年，Unihopper库博在中国投建了生产基地，并配套建立了大型仓储中心。2021年，全新打造的超20万平方米，首期12万平方米智能化库博工业园正式投入使用，园区的自动化与数字化水平，引领了行业新潮流。

作为一家高端定制家居五金制造商，Unihopper库博一直坚持以原创设计，以及“价格不上，品牌不下”为营销理念，已然成为全球众多家居企业和消费者追随的行业领导品牌。未来，库博集团将继续加大研发投入，推动产品应用升级、智能化场景导入、线上线下一体化管理等多维度发展，努力打造成为全球用户身边“更懂高端家居的五金品牌”和“全球最重要与最受尊重的家居五金企业”。



德国GS质量检测认证  
GS Quality Test  
Certification



英国皇冠ISO9001  
质量管理体系认证  
ISO 9001 Quality  
Management Certification



国家高新技术企业  
National High-  
Tech Enterprise



家居五金橱柜链、抽屉导轨、拉篮  
地产精英集团标准主起草单位  
Standards Maker of Kitchen  
Hardware Industry



采筑  
ALUP  
共建研发中心  
共建产品实验室 (CNAS)  
R&D center and product  
laboratory



美国好设计奖  
American  
Good Design



美国IDEA奖  
Featured  
Finalist



法国设计奖  
French  
Design Award

# THE LAYOUT OF UNIHOPPER ALL OVER THE WORLD

全球布局

## 46

Global exclusive agency  
设有国家独家代理

## 108

Global business dealings  
国家业务往来

## 150

National service agency cities  
全国服务代理城市

## 100+

national brand franchisees  
品牌加盟商

## 60+

First -and second-tier cities  
Open experience exhibition hall  
重点一二线城市开放式体验展厅



<p><b>NORTH AMERICA</b> 北美洲</p> <p>United States 美国 Mexico 墨西哥 Canada 加拿大 Guatemala 危地马拉 Costa Rica 哥斯达黎加</p>	<p><b>NORDIC</b> 北欧</p> <p>Finland 芬兰 Sweden 瑞典 Denmark 丹麦 Norway 挪威</p>	<p><b>SOUTHEAST ASIA</b> 东南亚</p> <p>Thailand 泰国 Malaysia 马来西亚 Vietnam 越南 Philippines 菲律宾 Indonesia 印尼 Singapore 新加坡 Cambodia 柬埔寨 Myanmar 缅甸 Laos 老挝</p>	<p><b>EASTERN EUROPE</b> 东欧</p> <p>Russia 俄罗斯 Estonia 爱沙尼亚 Ukraine 乌克兰 Moldova 摩尔多瓦 Belarus 白俄罗斯 Republic of Lithuania 立陶宛 Latvia 拉脱维亚</p>	<p><b>NORTH AMERICA</b> 东欧</p> <p>Hong Kong, China 中国香港 South Korea 韩国 Mongolia 蒙古 Taiwan, China 中国台湾 China 中国大陆</p>	<p><b>EASTERN ASIA</b> 东亚</p> <p>Hong Kong, China 中国香港 South Korea 韩国 Mongolia 蒙古 Taiwan, China 中国台湾 China 中国大陆</p>	<p><b>AFRICA</b> 非洲</p> <p>Nigeria 尼日利亚 Seychelles 塞舌尔 Uganda 乌干达 Benin 贝宁 Botswana 博茨瓦纳 Egypt 埃及 Ghana 加纳 Mauritius 毛里求斯 Reunion 留尼汪 South Africa 南非 Cameroon 喀麦隆 Malawi 马拉维 Zambia 赞比亚 CoteDivoire 科特迪瓦 Tunisia 突尼斯 Algeria 阿尔及利亚 Morocco 摩洛哥 Tanzania 坦桑尼亚</p>	<p><b>SOUTH AMERICA</b> 南美</p> <p>Peru 秘鲁 Bolivia 玻利维亚 Uruguay 乌拉圭 Brazil 巴西 Aruba 阿鲁巴 Ecuador 厄瓜多尔 Chile 智利 Venezuela 委内瑞拉 Colombia 哥伦比亚 Argentina 阿根廷</p>	<p><b>SOUTHERN EUROPE</b> 南欧</p> <p>Italy 意大利 Greece 希腊 Portugal 葡萄牙 Spain 西班牙 Serbia 塞尔维亚 Romania 罗马尼亚 Bulgaria 保加利亚 Macedonia 马其顿 Albania 阿尔巴尼亚 Malta 马耳他 Slovenia 斯洛文尼亚</p>	<p><b>SOUTHERN ASIA</b> 南亚</p> <p>India 印度 Pakistan 巴基斯坦 Sri Lanka 斯里兰卡 Maldives 马尔代夫 Nepal 尼泊尔 Bangladesh 孟加拉</p>	<p><b>WESTERN ASIA</b> 西亚</p> <p>Iraq 伊拉克 Israel 以色列 Dubai 迪拜 Turkey 土耳其 Qatar 卡塔尔 Kuwait 科威特 Saudi Arabia 沙特阿拉伯 Jordan 约旦 UE 阿联酋 Iran 伊朗 Oman 阿曼 Bahrain 巴林 Armenia 亚美尼亚 Azerbaijan 阿塞拜疆 Lebanon 黎巴嫩 Palestine 巴勒斯坦 Yemen 也门</p>	<p><b>CENTRAL</b> 中欧</p> <p>Switzerland 瑞士 Germany 德国 Poland 波兰 Slovakia 斯洛伐克 Hungary 匈牙利 Austria 奥地利 Czech Republic 捷克</p>	<p><b>CENTRAL AMERICA</b> 中美洲</p> <p>Panama 巴拿马</p>	<p><b>CENTRAL ASIA</b> 中亚</p> <p>Kyrgyzstan 吉尔吉斯斯坦 Kazakhstan 哈萨克斯坦</p>	<p><b>WESTERN EUROPE</b> 西欧</p> <p>Holland 荷兰 Britain 英国 France 法国 Ireland 爱尔兰</p>
<p><b>CENTRAL AMERICA</b> 中美洲</p> <p>Panama 巴拿马</p>	<p><b>OCEANIA</b> 大洋洲</p> <p>Australia 澳大利亚 New Zealand 新西兰</p>													

# COMPANY VISION

库博的理念

企业使命  
CORPORATE MISSION:

满足人们对美好生活的向往是库博人的使命追求  
To meet people's yearning for a better life is the mission  
pursuit of Unihopper

价值观  
VALUES:

诚信、利他、奋斗、创新、理解、共进  
Integrity, altruism, struggle, innovation, understanding,  
common progress



# LEKA岚卡·衣帽间系列 获国际殊荣



2024年度美国好设计奖「金奖」  
American Good Design



2024年度法国设计奖「金奖」  
FRENCH DESIGN AWARD



# MONIKA摩尼卡·衣帽间系列 获国际殊荣



2024年度法国设计奖  
FRENCH DESIGN AWARD

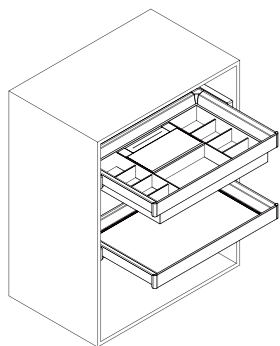


# INDEX

目录

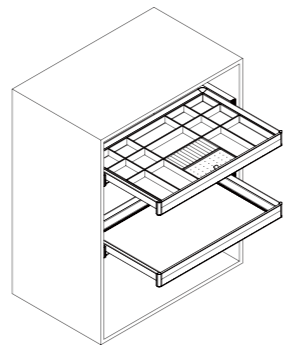
## L

Leka P. 017-058  
岚卡



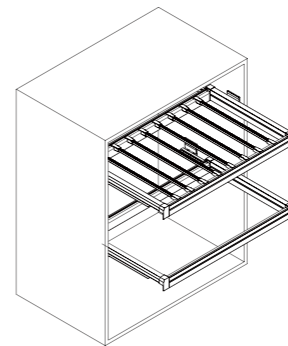
## M

Monika P. 059-104  
摩尼卡



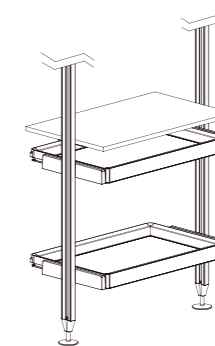
## M

Moka P. 153-210  
摩卡



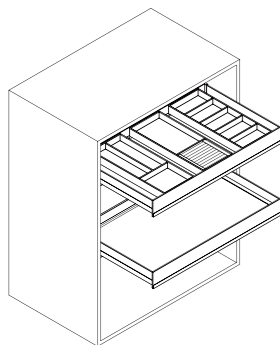
## L

Lego wardrobe P. 211-218  
乐高开放收纳系统



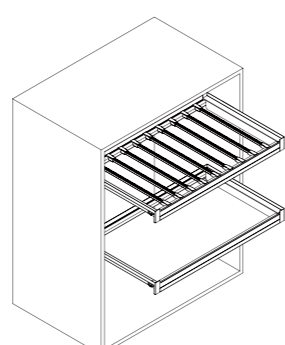
## V

Venka 2.0 P. 105-134  
梵卡 2.0



## G

Glass Naka P. 135-152  
玻璃拿铁





# LEKA STORAGE SYSTEM

岚卡衣柜收纳系统

LEKA

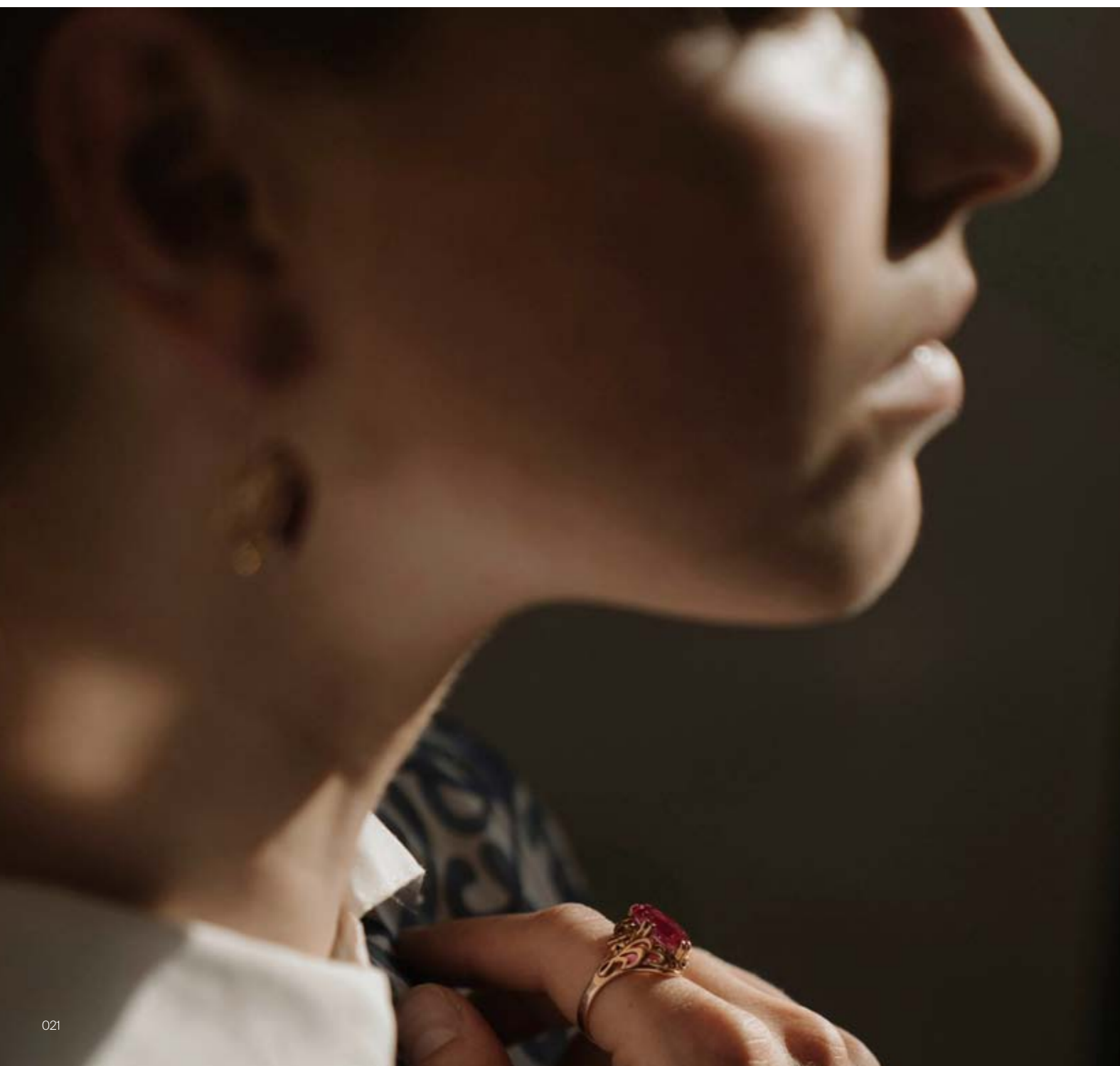
Makes full use of the upper, middle and lower layers of wardrobe to design a storage system -- make your wardrobe more tidy and orderly.

针对使用者从头到脚的物品收纳需求，对衣柜空间进行上、中、下分层规划，库博用独具匠心的产品来诠释和塑造，使得衣柜空间不仅得以有序和充分利用，更散发出精致和高贵的气质，从而让家更整洁、有序和美好。



High-quality innovation texture leather only to bring you the exquisite luxury storage experience on LEKA.

注重细节之美，带来灵活而舒适的收纳体验。





Having the private space with fragrance of your own style.

邂逅香氛时刻，品味轻奢生活的魅力。



LEKA /  
Leather multifunctional storage box

→ 岚卡轻奢皮革饰品收纳盒





LEKA /  
Leather flat storage box

→ 岚卡轻奢皮革平板收纳篮



# WELL-ORGANIZED WARDROBE STORAGE DESIGN LET YOU ENJOY YOUR ORDERLY LIFE.

将收纳视为真正体现心思的哲学，轻巧的收纳设计，让物品井井有条的摆放在你的衣橱之中，让你在享受生活的时候，尽显精致生活的本质。





The perfect combination of high quality leather and aluminium alloy achieves the unique products.  
活动式挂杆设计，从容而优雅的选择。海绵夹层加载，给予舒适的肤感按压体验。

LEKA /  
Leather trousers rack

→ 岚卡轻奢皮革裤架





LEKA /  
Leather underwear storage box

→ 岚卡轻奢皮革内衣收纳



Having the private space with fragrance of your own style.  
设有专属私密衣物空间，让隐私，更隐蔽

THE LEATHER STORAGE BOX KEEPS YOUR UNDERWEAR A PERFECT STORAGE.

精致大容量，承重力 MAX，四季衣物均可整齐收纳。



LEKA /  
Leather storage bag

→ 岚卡轻奢皮革收纳篮





LEKA /  
Leather trousers rack

→ 岚卡轻奢皮革鞋架



LEKA /  
Clothes hook

→ 衣钩



LEKA /  
Portable jewelry bag

→ 岚卡便携式首饰收纳包



LOCKBOX WITH THE DOUBLE-SAFETY DESIGN OF PASSWORD AND FINGERPRINTING, INCREASING THE INTELLIGENT SECURITY FOR THE CHERISHED STUFFS.

全方位的腕表展示柜，采用防磁化设计，搭配环境氛围灯、高透钢化玻璃，尽显品味高雅。



LEKA /  
Watch winder

→ 岚卡摇表器



LOCKBOX WITH THE DOUBLE-SAFETY DESIGN OF PASSWORD AND FINGERPRINTING,  
INCREASING THE INTELLIGENT SECURITY FOR THE CHERISHED STUFFS.

岚卡密码箱，容量升级好收纳。采用抗锈防腐层，高强度通用框架，外观简洁美观，将优雅格调与实用主义完美结合。



LEKA /  
Lockbox

→ 岚卡密码箱





LEKA /  
Leather makeup storage

→ 岚卡轻奢皮革美妆抽





LEKA /  
3 layers of rotating basket

→ 岚卡三层旋转衣物篮

WITH MINIMALIST AND PRACTICAL DESIGN,  
IT PROVIDES A VARIETY OF SPACE WITH  
MULTIFUNCTIONAL STORAGE, REALIZING THE  
FREEDOM FROM STATIC TO DYNAMIC.

以极简有型美观实用的收纳设计，为衣柜收纳提供更大的空间，更多的想象。多重收纳的应用组合，让家居空间实现了，从静态到动态的灵活切换。





LEKA /  
Rotating shoe rack

→ 岚卡旋转鞋架



Electric movement and any stop capacity. Dual motor synchronous control ensures smooth and steady operation, with consistent speed and quiet, smooth movement.

电动升降，可自由悬停。双电机同步控制，匀速运行，升降平稳，顺滑静音。



LEKA /  
Electric wardrobe lift

→ 岚卡电动升降挂衣架



High-quality innovation texture leather only to bring you the exquisite luxury storage experience on TENGO.

简约时尚，任凭颜值气度不凡。



LEKA /  
Portable storage box

→ 岚卡可移动式收纳盒

TENGO /  
Clothes hanger

→ 探戈挂衣杆





## → FEATURES / 产品特点

- Having the private space with fragrance of your own style

邂逅香氛时刻，品味轻奢生活魅力。设有专属私密衣物空间，让隐私，更隐蔽

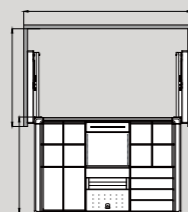
- The perfect combination of high quality leather and aluminium alloy achieves the unique products.

选用奢质皮革、航空级合金，巧妙融合皮饰与铝合金框架，实现软硬和谐共存

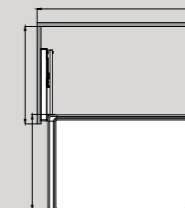
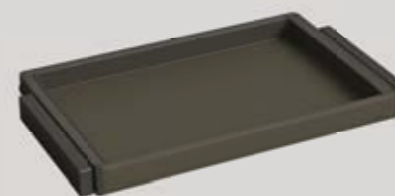
- Color: Olive Green  
颜色：橄榄绿 (OL)


**LEKA LEATHER MULTIFUNCTIONAL STORAGE BOX**  
 岚卡轻奢皮革饰品收纳篮

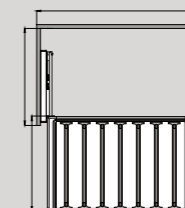
MODEL 型号	CABINET 柜体 W (mm)	WIDTH x DEPTH x HEIGHT (mm) 宽 x 深 x 高 (mm) . 含导轨
WS4172S.060.OL	600	564x457x65
WS4172S.070.OL	700	664x457x65
WS4172S.080.OL	800	764x457x65
WS4172S.090.OL	900	864x457x65
WS4172S.100.OL	1000	964x457x65


**LEKA LEATHER FLAT STORAGE BOX**  
 岚卡轻奢皮革平板收纳篮

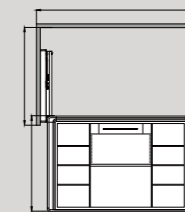
MODEL 型号	CABINET 柜体 W (mm)	WIDTH x DEPTH x HEIGHT (mm) 宽 x 深 x 高 (mm) . 含导轨
WS4173S.060.OL	600	564x457x65
WS4173S.070.OL	700	664x457x65
WS4173S.080.OL	800	764x457x65
WS4173S.090.OL	900	864x457x65
WS4173S.100.OL	1000	964x457x65


**LEKA LEATHER TROUSERS RACK**  
 岚卡轻奢皮革裤架

MODEL 型号	CABINET 柜体 W (mm)	WIDTH x DEPTH x HEIGHT (mm) 宽 x 深 x 高 (mm) . 含导轨
WS4174S.060.OL	600	564x457x65
WS4174S.070.OL	700	664x457x65
WS4174S.080.OL	800	764x457x65
WS4174S.090.OL	900	864x457x65
WS4174S.100.OL	1000	964x457x65

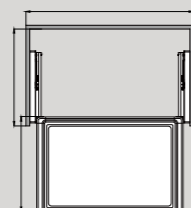

**LEKA LEATHER UNDERWARE STORAGE BOX**  
 岚卡轻奢皮革内衣收纳篮

MODEL 型号	CABINET 柜体 W (mm)	WIDTH x DEPTH x HEIGHT (mm) 宽 x 深 x 高 (mm) . 含导轨
WS4175S.060.OL	600	564x457x130
WS4175S.070.OL	700	664x457x130
WS4175S.080.OL	800	764x457x130
WS4175S.090.OL	900	864x457x130
WS4175S.100.OL	1000	964x457x130

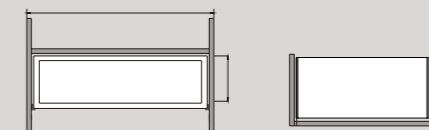



**LEKA LEATHER STORAGE BAG**  
 岚卡轻奢皮革收纳篮

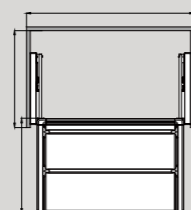

MODEL 型号	CABINET 柜体 W (mm)	WIDTH x DEPTH x HEIGHT (mm) 宽 x 深 x 高 (mm) . 含导轨
WS4176S.060.OL	600	564x457x220
WS4176S.070.OL	700	664x457x220
WS4176S.080.OL	800	764x457x220
WS4176S.090.OL	900	864x457x220
WS4176S.100.OL	1000	964x457x220


**LEKA WATCH WINDER**  
 岚卡摇表器

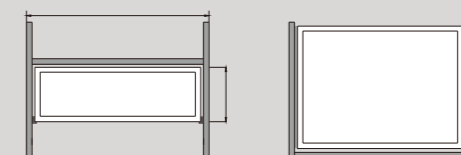

MODEL 型号	CABINET 柜体 W (mm)	WIDTH x DEPTH x HEIGHT (mm) 宽 x 深 x 高 (mm) . 含导轨
WS4179.060.OL	600	564x350x230
WS4179.080.OL	800	764x350x230
WS4179.090.OL	900	864x350x230


**LEKA LEATHER SHOES RACK**  
 岚卡轻奢皮革平板鞋架

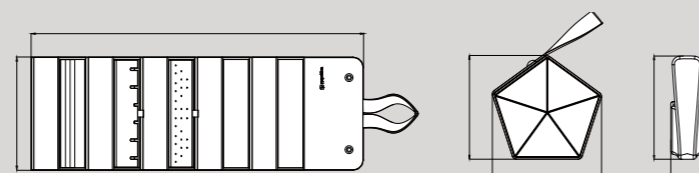

MODEL 型号	CABINET 柜体 W (mm)	WIDTH x DEPTH x HEIGHT (mm) 宽 x 深 x 高 (mm) . 含导轨
WS4177S.060.OL	600	564x457x85
WS4177S.070.OL	700	664x457x85
WS4177S.080.OL	800	764x457x85
WS4177S.090.OL	900	864x457x85
WS4177S.100.OL	1000	964x457x85


**LEKA LOCKBOX**  
 岚卡密码箱

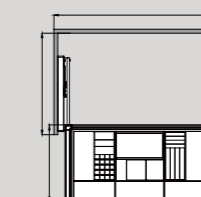

MODEL 型号	CABINET 柜体 W (mm)	WIDTH x DEPTH x HEIGHT (mm) 宽 x 深 x 高 (mm) . 含导轨
WS4180.060.OL	600	564x402x152
WS4180.070.OL	700	664x402x152
WS4180.080.OL	800	764x402x152
WS4180.090.OL	900	864x402x152


**LEKA PORTABLE JEWELRY BAG**  
 岚卡便携式首饰收纳包


MODEL 型号	DESCRIBE 描述	MATERIAL 材料
WS4178.165.OL	收纳包	皮质
HD7118.GG	衣钩	锌合金


**LEKA LEATHER MAKEUP STORAGE**  
 岚卡轻奢皮革美妆抽

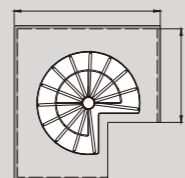
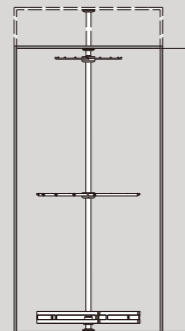

MODEL 型号	CABINET 柜体 W (mm)	WIDTH x DEPTH x HEIGHT (mm) 宽 x 深 x 高 (mm) . 含导轨
WS4182S.090.OL	900	864x457x130
WS4182S.100.OL	1000	964x457x130





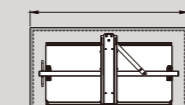
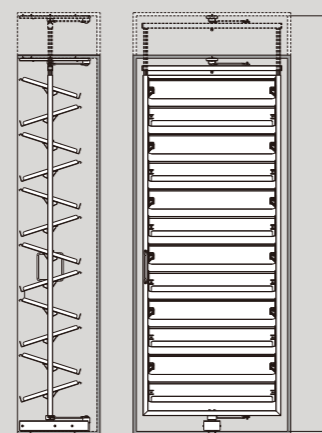
**LEKA 3 LAYERS OF ROTATING BASKET**  
岚卡三层旋转衣物篮

MODEL 型号	CABINET 柜体 W (mm)	WIDTH x DEPTH x HEIGHT (mm) 宽 x 深 x 高 (mm) . 含导轨	DESCRIBE 描述
WS4190.GG	800	700x700x1900-2100	整套



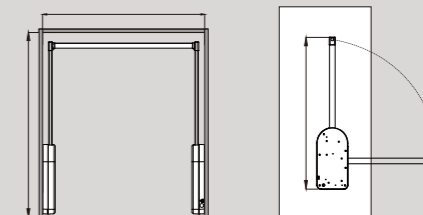
**LEKA ROTATING SHOE RACK**  
岚卡旋转鞋架

MODEL 型号	CABINET 柜体 W (mm)	WIDTH x DEPTH x HEIGHT (mm) 宽 x 深 x 高 (mm) . 含导轨	DESCRIBE 描述
WS4522S.080K.GG	800	685x360x230x1920-2210	12层 / 整套
WS4522S.080G.GG	800	685x360x230x1360-1650	8层 / 整套



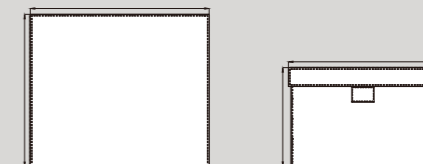
**LEKA ELECTRIC WARDROBE LIFT**  
岚卡电动升降衣架

MODEL 型号	CABINET 柜内宽 W (mm)	MATERIAL 材料
WS2106.070.OL	664	铝合金
WS2106.080.OL	764	铝合金
WS2106.090.OL	864	铝合金
WS2106.100.OL	964	铝合金
WS2106.120.OL	1164	铝合金



**LEKA PORTABLE STORAGE BOX**  
岚卡可移动式收纳盒

MODEL 型号	SIZE 尺寸 (mm)	MATERIAL 材料
WSL6.130.OL	480*400*130	皮质
WSL6.260.OL	480*400*260	皮质



**TENGO CLOTHES HANGER**  
探戈挂衣杆

MODEL 型号	DESCRIBE 描述	LENGTH (mm) 长度
TS1412.022.GG	衣通托	
AP2281.OL	衣通	≤ 1000



衣杆长度L=孔距W

# M



## MONIKA 2.0 STORAGE SYSTEM

摩尼卡 2.0 衣柜收纳系统

# MONIKA 2.0

MONIKA 2.0 COMBINES ELEGANCE WITH PRAGMATISM TO MEET ALL EXPECTATIONS OF QUALITY LIFE AND IS THE WAY WE HAVE LONG LOOKED FORWARD TO IT.

高贵不是物质的奢华，而是一种精致的生活态度。摩尼卡 2.0 系列将优雅格调与实用主义完美融合，满足对品质生活的所有期望，是我们憧憬已久的生活方式。



# MONIKA 2.0

The Monika 2.0 series unveils a new wave-texture design, enriching the metal essence and creating a deeper visual dimension. It embodies the lifestyle we aspire to.

摩尼卡 2.0 系列全新升级波浪纹理设计，丰富了产品的金属质感和视觉层次感，是我们追求的品质生活。

NOBILITY IS NOT MATERIAL LUXURY, BUT A REFINED ATTITUDE TO LIFE.

高雅与实用的结合，为所有物品提供完美的收纳方式，使衣柜透出优雅气质。





MONIKA 2.0 /  
Leather flat storage box

→ 摩尼卡 2.0 皮革平板收纳篮



LEATHER MULTIFUNCTIONAL STORAGE BOX





MONIKA 2.0 /  
Leather multifunctional storage box

→ 摩尼卡 2.0 皮革饰品收纳盒



EXTRAORDINARY VISUAL ENJOYMENT WITH  
FUNCTIONAL AND STYLISH DESIGN, TO  
STORE THE JEWELRY PERFECTLY.

高雅时尚，非一般的视觉享受。丰富的收纳功能，足够  
您收纳一切所需物品，兼顾了实用性和舒适性，只将最  
美好的一面展现给你。



THE TROUSERS RACK WITH ANTI-SLIP DESIGN, KEEP THE PANTS ORDERLY AND MAKE IT EASY FOR TAKING.

分隔裤架设计，不仅扩大收纳空间，而且拿取方便。加粗挂条设计，裤子不易掉落，不易起折痕，让您的裤子保持熨烫之后的笔直与整洁。





MONIKA 2.0 /  
Trousers rack

→ 摩尼卡 2.0 裤架

# The beauty of orderliness.

“It feels like a luxury touch”, the elegant design is not restricted by any times and tide, but makes your wardrobe full of charming.

“可以触摸的奢华”，高雅的设计不受任何时代与潮流限制，别于世俗眼光的风采，使您的衣橱充满魅力。



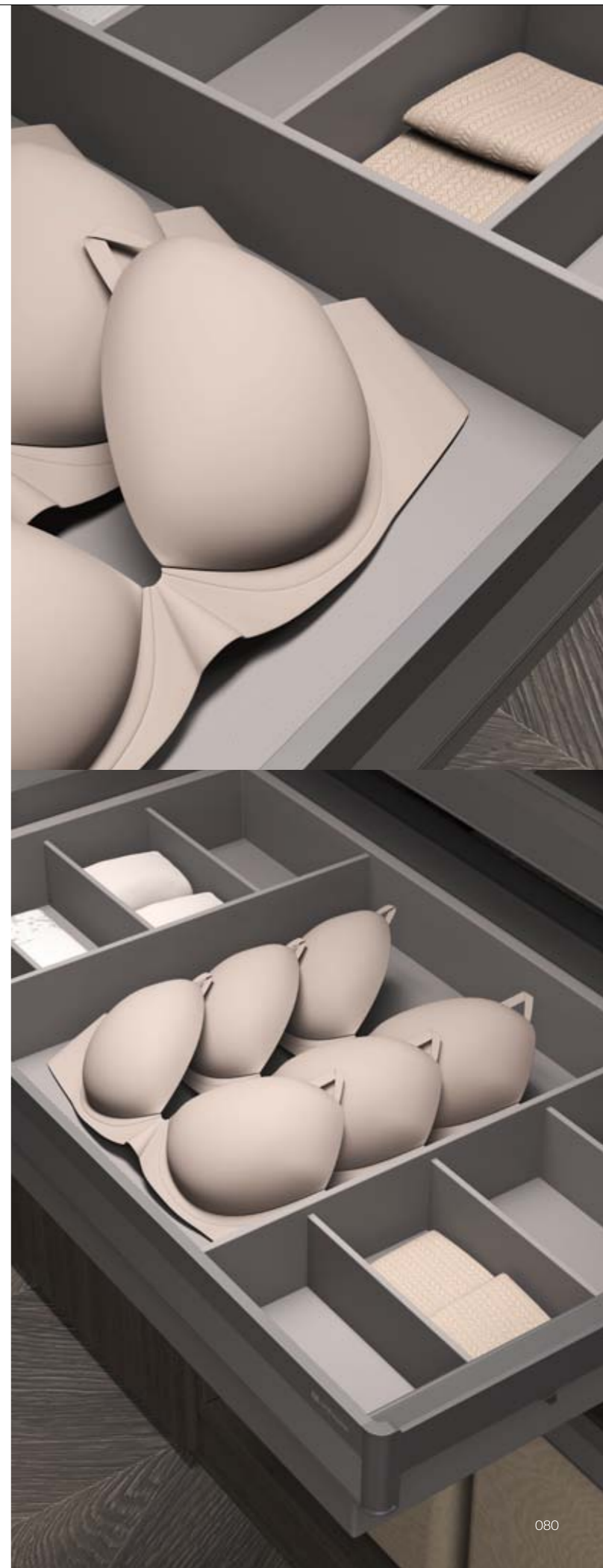
THE LEATHER STORAGE BOX KEEPS YOUR UNDERWEAR A PERFECT STORAGE.

分类收纳设计，细心呵护贴身衣物。品质生活由内而外，细腻的触感带来极致的生活愉悦感。



MONIKA 2.0 /  
Leather underwear storage box

→ 摩尼卡 2.0 皮革内衣收纳篮





MULTI-FUNCTIONAL AND CABINET-STYLED DESIGN IS UTILITY TO MAKE GOOD USE OF THE WARDROBE SPACE.  
多功能收纳充分利用衣柜空间，入柜式设计，低调又不失奢华，达到一种极致生活体验。

MONIKA 2.0 /  
Leather storage bag

→ 摩尼卡 2.0 皮革收纳篮





# MONIKA 2.0

## STORAGE SYSTEM



MONIKA 2.0 /  
Laundry bag

→ 摩尼卡 2.0 麻布收纳篮





MONIKA 2.0 /  
Shoes rack

→ 摩尼卡 2.0 鞋架



# MONIKA Rotating mirror

MONIKA rotated mirror with a gun grey integrated frame,adjustable tension and customizable angle, blending style and practicality.

摩尼卡门后视镜，枪灰色一体边框，力度可调控，角度任意停，时尚与实用性兼容。



MONIKA /  
Rotating mirror

→ 摩尼卡门后视镜

Angle positioning as desired with 180 degree concealed hinge, concealed handle, magnetic opening and closing,simple and exquisite appearance.

隐藏式 180° 任意停铰链，隐藏式拉手，磁吸开合，外观简约精致。





MONIKA /  
Pull out mirror

→ 摩尼卡推拉镜



IT IS THE COMBINATION OF CLASSIC AND FASHION AND EXPRESS THE ELEGANT STORAGE AND GENTLEMAN'S STYLE. WITH SLOW MOTION PULL-OUT DESIGN, TO ADD A SENSE OF ORDER AND BEAUTY TO THE WARDROBE.

优雅收纳，尽显绅士风范。经典与时尚的结合，既保留了传统的优雅，又融入了时尚元素，搭配阻尼推拉设计，为您的衣橱增添一份秩序和美感。

MONIKA /  
Side-mounted tie rack

→ 侧装领带架



MONIKA /  
Top-mounted hanger

→ 缓冲顶装挂衣架



MONIKA /  
Top-mounted d-trouser rack

→ 摩尼卡顶装双排裤架



MONIKA /  
Top-mounted s-trouser rack

→ 摩尼卡顶装单排裤架

MAKE FULL USE OF SIDE SPACE TO ENHANCE STORAGE EXPERIENCE AND OVERALL AESTHETICS. THREE LAYERS STORAGE ACHIEVED THE AESTHETIC DESIGN, SIMPLE BUT WITH SUPER CAPACITY. MATCHING WITH VARIOUS OF HOME STYLES PERFECTLY.

高效利用侧边空间，提升您的收纳体验和整体美观度。三层超大容量，融入了美学设计，简约时尚，能够与各种家居风格完美搭配。

MONIKA /  
Side storage basket

→ 侧装储物架





## → FEATURES / 产品特点

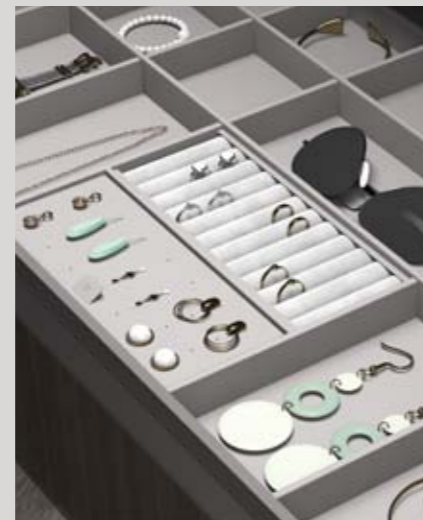
- Traditional U-shaped clip-mounted structure , perfect design with slide spacer to avoid various types of hinges, compatible with different wardrobe cabinets

经典 U 型快装结构, 门铰避让设计, 轻松避开直臂中弯大弯乃至天地铰链所有开门方式的柜体, 无惧一切空间的影响

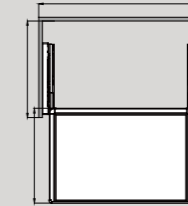
- The upgrade to Gun Grey color, adding the metallic to the whole product. Arc edge design, displaying the beauty of industrial design

框架颜色升级, 让产品整体更具金属感, 整体弧边设计, 展现工业设计的线条美感

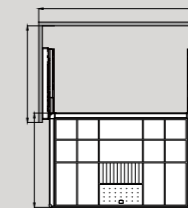
- Color: Gun Grey  
颜色: 枪灰色 (GG)


**MONIKA2.0 LEATHER FLAT STORAGE BOX**  
 摩尼卡 2.0 皮革平板收纳篮

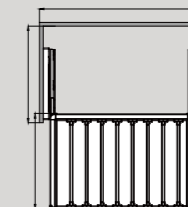

MODEL 型号	CABINET 柜体 W (mm)	WIDTH x DEPTH x HEIGHT (mm) 宽 x 深 x 高 (mm) . 含导轨
WS4183S.060M.GG	600	562~582x456x67
WS4183S.070M.GG	700	662~682x456x67
WS4183S.080M.GG	800	762~782x456x67
WS4183S.090M.GG	900	862~882x456x67
WS4183S.100M.GG	1000	962~982x456x67


**MONIKA2.0 LEATHER MULTIFUNCTIONAL STORAGE BOX**  
 摩尼卡 2.0 皮革饰品收纳盒


MODEL 型号	CABINET 柜体 W (mm)	WIDTH x DEPTH x HEIGHT (mm) 宽 x 深 x 高 (mm) . 含导轨
WS4184S.060M.GG	600	562~582x456x67
WS4184S.070M.GG	700	662~682x456x67
WS4184S.080M.GG	800	762~782x456x67
WS4184S.090M.GG	900	862~882x456x67
WS4184S.100M.GG	1000	962~982x456x67

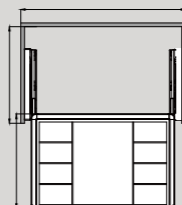

**MONIKA2.0 TROUSERS RACK**  
 摩尼卡 2.0 裤架


MODEL 型号	CABINET 柜体 W (mm)	WIDTH x DEPTH x HEIGHT (mm) 宽 x 深 x 高 (mm) . 含导轨
WS4185S.060M.GG	600	562~582x456x67
WS4185S.070M.GG	700	662~682x456x67
WS4185S.080M.GG	800	762~782x456x67
WS4185S.090M.GG	900	862~882x456x67
WS4185S.100M.GG	1000	962~982x456x67

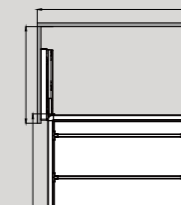



**MONIKA2.0 LEATHER UNDERWARE STORAGE BOX**  
 摩尼卡 2.0 皮革内衣收纳篮

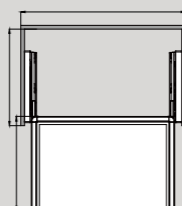

MODEL 型号	CABINET 柜体 W (mm)	WIDTH x DEPTH x HEIGHT (mm) 宽 x 深 x 高 (mm) . 含导轨
WS4186S.060M.GG	600	562~582x456x124
WS4186S.070M.GG	700	662~682x456x124
WS4186S.080M.GG	800	762~782x456x124
WS4186S.090M.GG	900	862~882x456x124
WS4186S.100M.GG	1000	962~982x456x124


**MONIKA2.0 SHOES RACK**  
 摩尼卡 2.0 鞋架

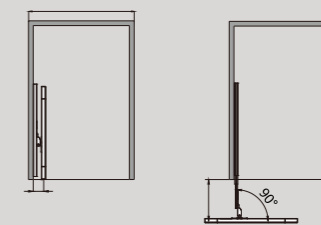

MODEL 型号	CABINET 柜体 W (mm)	WIDTH x DEPTH x HEIGHT (mm) 宽 x 深 x 高 (mm) . 含导轨
WS4189S.060M.GG	600	562~582x456x80
WS4189S.070M.GG	700	662~682x456x80
WS4189S.080M.GG	800	762~782x456x80
WS4189S.090M.GG	900	862~882x456x80
WS4189S.100M.GG	1000	962~982x456x80


**MONIKA2.0 LEATHER STORAGE BAG**  
 摩尼卡 2.0 皮革收纳篮


MODEL 型号	CABINET 柜体 W (mm)	WIDTH x DEPTH x HEIGHT (mm) 宽 x 深 x 高 (mm) . 含导轨
WS4187S.060M.GG	600	562~582x456x196
WS4187S.070M.GG	700	662~682x456x196
WS4187S.080M.GG	800	762~782x456x196
WS4187S.090M.GG	900	862~882x456x196
WS4187S.100M.GG	1000	962~982x456x196


**MONIKA PULL OUT MIRROR**  
 摩尼卡推拉镜

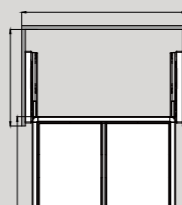

MODEL 型号	CABINET 柜体 W (mm)	WIDTH x DEPTH x HEIGHT (mm) 宽 x 深 x 高 (mm) . 含导轨
WS3106.030.GG	> 300	48x300x1000



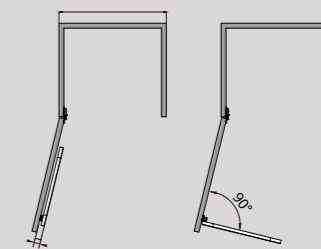
最大角度支持: 150°

**MONIKA2.0 LAUNDRY BAG**  
 摩尼卡 2.0 麻布收纳篮


MODEL 型号	CABINET 柜体 W (mm)	WIDTH x DEPTH x HEIGHT (mm) 宽 x 深 x 高 (mm) . 含导轨
WS4188S.060M.GG	600	562~582x456x449
WS4188S.070M.GG	700	662~682x456x449
WS4188S.080M.GG	800	762~782x456x449
WS4188S.090M.GG	900	862~882x456x449
WS4188S.100M.GG	1000	962~982x456x449

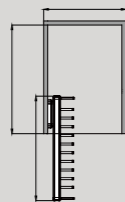

**MONIKA ROTATING MIRROR**  
 摩尼卡门后镜


MODEL 型号	CABINET 柜体 W (mm)	WIDTH x DEPTH x HEIGHT (mm) 宽 x 深 x 高 (mm)
WS3107.040.GG	> 400	25x300x1000

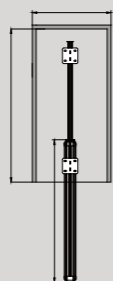



**MONIKA SIDE-MOUNTED TIE RACK**  
 摩尼卡侧装领带架

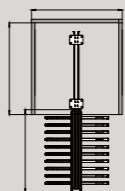
MODEL 型号	CABINET 柜体 W (mm)	WIDTH x DEPTH x HEIGHT (mm) 宽 x 深 x 高 (mm)
WS4209.105.(A)	> 300	107x436x76


**MONIKA TOP-MOUNTED HANGER**  
 摩尼卡缓冲顶装挂衣架

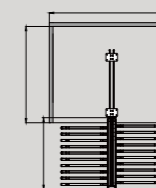
MODEL 型号	CABINET 柜体 W (mm)	WIDTH x DEPTH x HEIGHT (mm) 宽 x 深 x 高 (mm) . 含导轨
WS4342.460.GG	> 300	50x455x108


**MONIKA TOP-MOUNTED S-TROUSER RACK**  
 摩尼卡顶装单排裤架

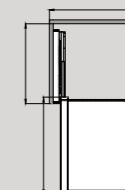
MODEL 型号	CABINET 柜体 W (mm)	WIDTH x DEPTH x HEIGHT (mm) 宽 x 深 x 高 (mm) . 含导轨
WS4343.360.(A)	> 400	356x458x131

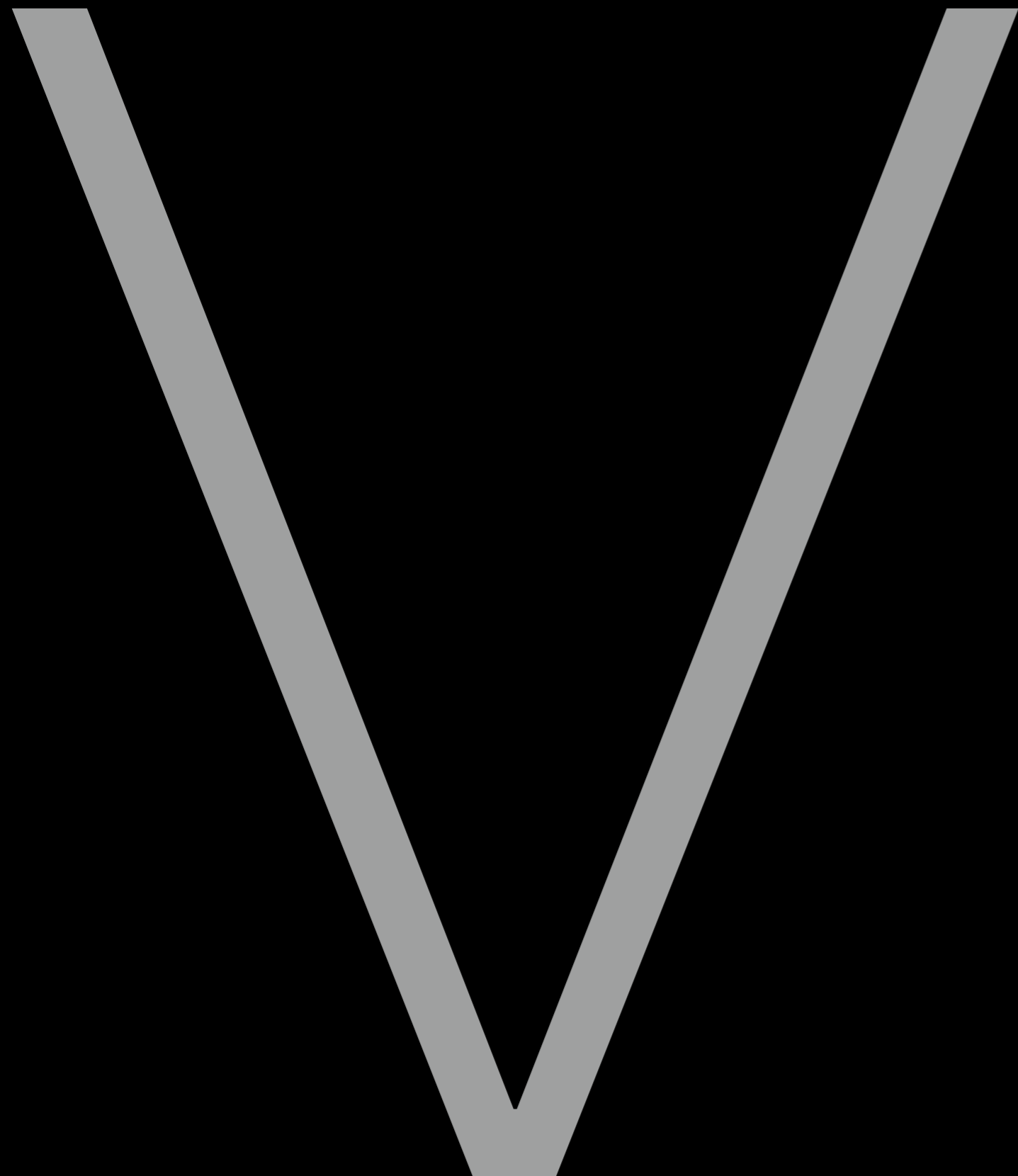

**MONIKA TOP-MOUNTED D-TROUSER RACK**  
 摩尼卡顶装双排裤架

MODEL 型号	CABINET 柜体 W (mm)	WIDTH x DEPTH x HEIGHT (mm) 宽 x 深 x 高 (mm) . 含导轨
WS4344.660.(A)	> 700	658x458x93


**MONIKA SIDE STORAGE BASKET**  
 摩尼卡侧装储物架

MODEL 型号	CABINET 柜体 W (mm)	WIDTH x DEPTH x HEIGHT (mm) 宽 x 深 x 高 (mm) . 含导轨	DESCRIBE 描述
WS4523SR.040.GG	> 400	353x454x782	不带垫板
WS4523SL.040.GG	> 400	353x454x782	不带垫板
WS4523SR.040L.GG	> 400	353x454x782	带垫板
WS4523SL.040L.GG	> 400	353x454x782	带垫板





# VENKA 2.0 STORAGE SYSTEM

梵卡 2.0 衣柜收纳系统

# VENKA 2.0

"静谧蓝"与"宾利棕"的碰撞,把握优雅尺度,演绎非凡品味  
An innovation color combination of Serenity and Elegant brown

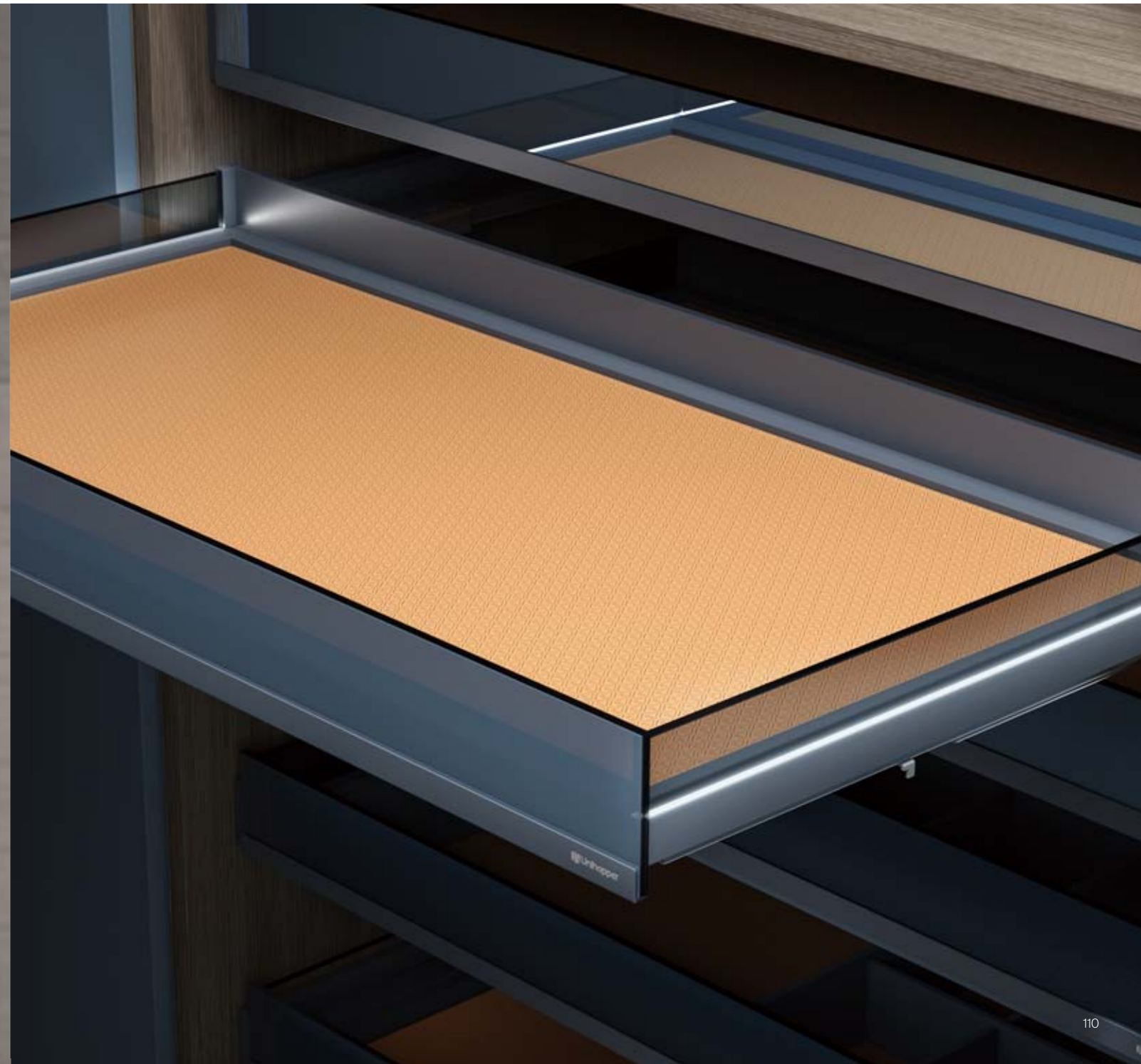


High-quality innovation texture leather only to bring you the exquisite luxury storage experience on VENKA 2.0.

甄选优质奔驰纹理皮革，拒绝千篇一律的平庸纹理，只为在独特细腻的皮革之上，带来精致雅奢的收纳体验。

The collision of LED luminous glass and leather combines beauty and practicality.

LED 发光玻璃与皮革的碰撞，将美感与实用性融为一体。



VENKA 2.0 /  
Leather multifunctional storage box

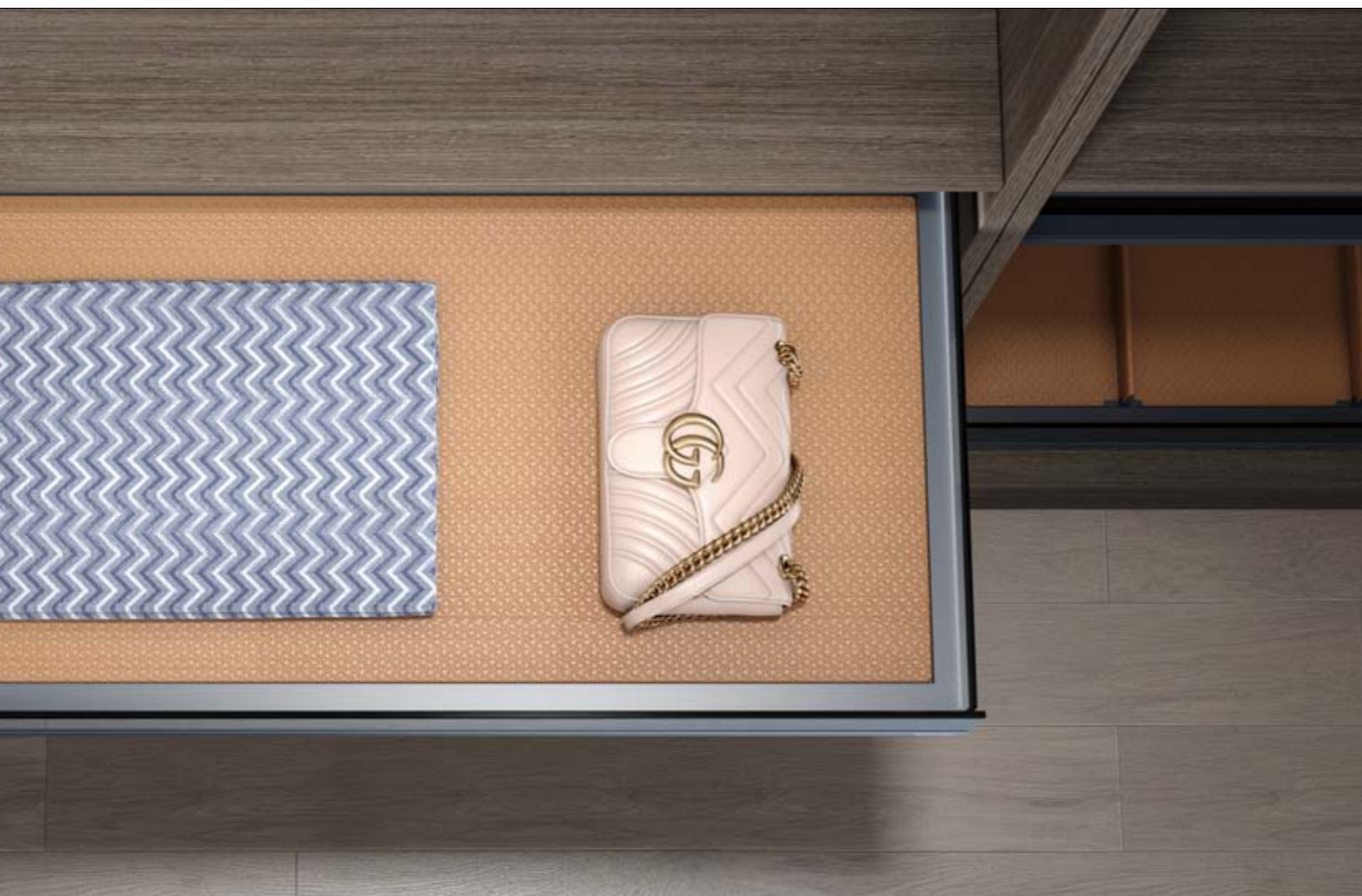
→ 梵卡 2.0 轻奢皮革饰品收纳盒

The layout of jewelry box expresses the taste of elegant and delicate. The fancy divider satisfy the storage of various ornaments perfectly. It meets the independent storage of belt, tie, and jewelry.

雅韵别致的独立分区收纳，贴心满足不同饰品的摆放需求，可将领带、皮带、饰品独立位置，整体布局考究，展现精致优雅的格调。







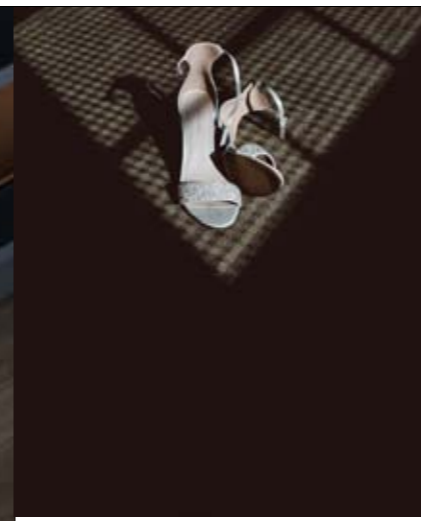
VENKA 2.0 /  
Leather flat storage box

→ 梵卡 2.0 轻奢皮革平板收纳篮



VENKA 2.0 /  
Leather shoes rack

→ 梵卡 2.0 轻奢皮革鞋架



The raised plate and horizontal storage of shoe rack helps you to take and put shoes easily and storage tidily.  
垫高板与横向收纳设计，为鞋架注入新活力，取放方便，收纳整洁，让爱鞋以优雅姿态呈现眼前。





VENKA 2.0 /  
Leather trousers rack

→ 梵卡 2.0 轻奢皮革裤架

WELL-ORGANIZED WARDROBE STORAGE DESIGN  
LET YOU ENJOY YOUR ORDERLY LIFE.

将收纳视为真正体现心思的哲学。轻巧的收纳设计，让物品井井有条的摆放在你的衣橱之中，让在享受生活的同时，尽显精致生活的本质。





LEATHER BAG FOR CLOTH--BEING ORDERLY, BEING ELEGANT.

是衣物篮，更是装饰品。皮篮设计，高端大气，细心呵护衣物。品质生活由内而外，守护您做精致女人。

VENKA 2.0 /  
Leather storage bag

→ 梵卡 2.0 轻奢皮革收纳篮





# VENKA 2.0 STORAGE SYSTEM

THE LEATHER STORAGE BOX KEEPS YOUR UNDERWEAR A PERFECT STORAGE.  
当皮革与金属相遇，是柔与刚的碰撞，也是温馨与冷艳的相拥，彰显内衣收纳的高级感。

VENKA 2.0 /  
Leather underwear storage box

→ 梵卡 2.0 轻奢皮革内衣收纳



NEW

VENKA 2.0 integrates materials and technology to create an elegant life for you.

梵卡 2.0 系列将材质与精湛工艺完美融合，为你打造富有品质的生活。一针一线严谨细致，锻造出时尚精致。推拉之间，静享库博匠人的诚意之作。

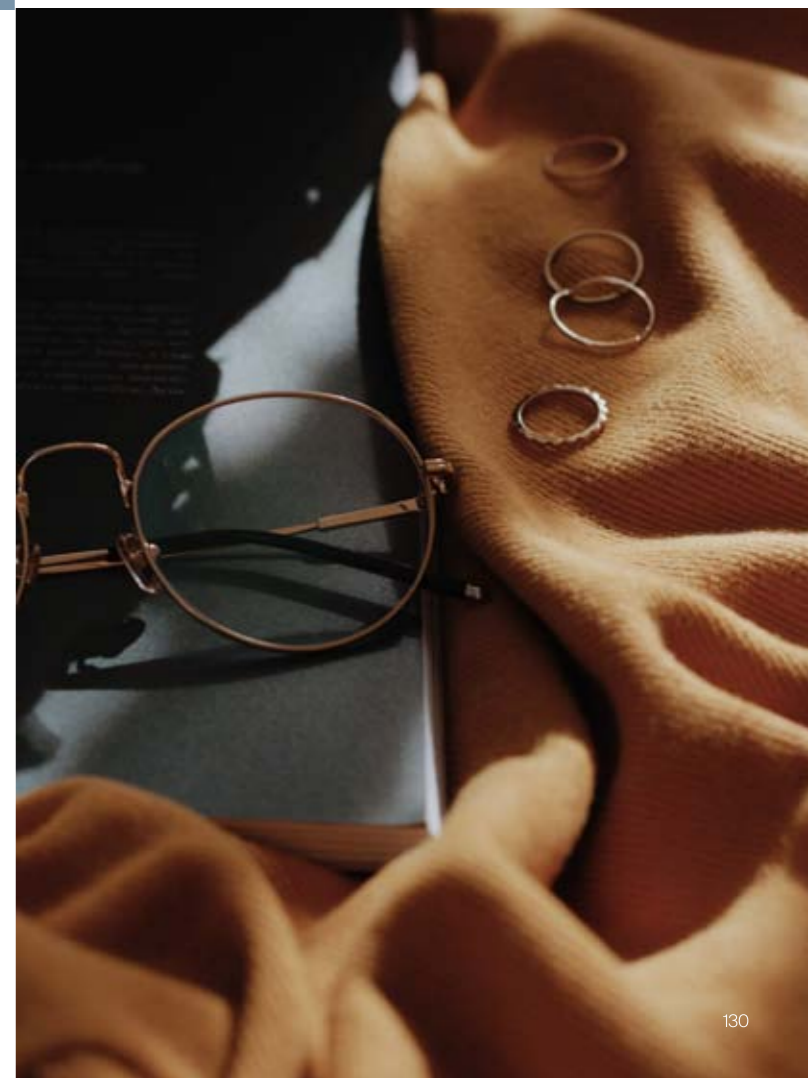


High-quality innovation texture leather only to bring you the exquisite luxury storage experience on VENKA 2.0.

升级真皮打造，触感更贴合，防滑纹理设计，下拉间增加手柄摩擦系数，力求适配衣柜高端格调，更兼具实用性与舒适性。

VICTORA 2.0 /

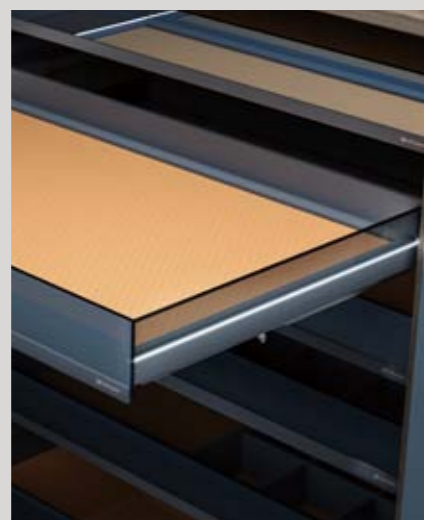
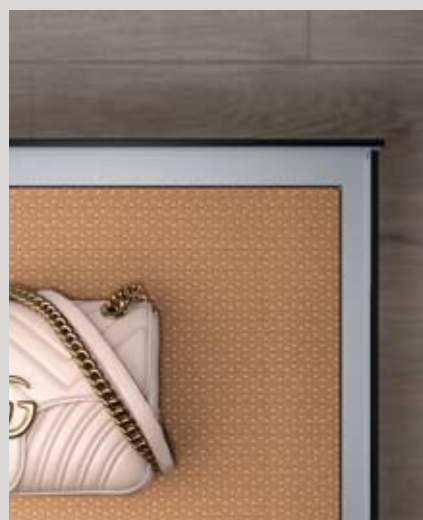
→ 维多拉 2.0 双缓冲下拉衣架



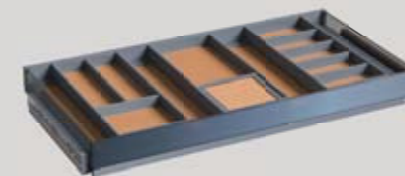


→ FEATURES / 产品特点

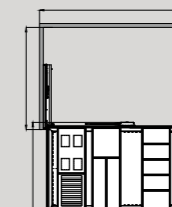
- A blending between LED luminous glass and leather conveys luxurious charm and elegant classics, bringing a warm and comfortable sensory enjoyment to people  
LED 发光玻璃与皮革的碰撞，传递出轻奢气韵和雅致经典，给人以温馨舒适的感官享受
- Color: Serenity and Elegant brown  
颜色：静谧蓝 + 宾利棕 (TBU)
- Quick assembly, linkage two way slow motion slide +high strength aluminum alloy general frame +LED luminous glass drawer side, combining with multifunctional storage boxes  
快装、联动双缓冲导轨 + 高强度铝合金通用框架 +LED 发光玻璃侧邦，配合多种收纳功能模块
- LED temperature 4000K  
LED 色温 4000K



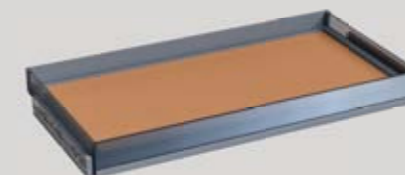
VENKA 2.0 LEATHER MULTIFUNCTIONAL STORAGE BOX  
梵卡 2.0 轻奢皮革饰品收纳盒



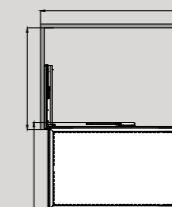
MODEL 型号	CABINET 柜体 W (mm)	WIDTH x DEPTH x HEIGHT (mm) 宽 x 深 x 高 (mm) . 含导轨
WS4158S.060.TBU	600	564x457x81
WS4158S.070.TBU	700	664x457x81
WS4158S.080.TBU	800	764x457x81
WS4158S.090.TBU	900	864x457x81
WS4158S.100.TBU	1000	964x457x81



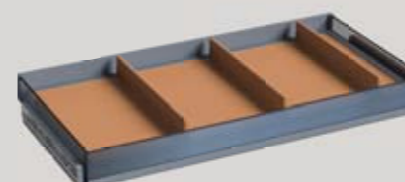
VENKA 2.0 LEATHER FLAT STORAGE BOX  
梵卡 2.0 轻奢皮革平板收纳篮



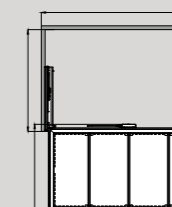
MODEL 型号	CABINET 柜体 W (mm)	WIDTH x DEPTH x HEIGHT (mm) 宽 x 深 x 高 (mm) . 含导轨
WS4159S.060.TBU	600	564x457x81
WS4159S.070.TBU	700	664x457x81
WS4159S.080.TBU	800	764x457x81
WS4159S.090.TBU	900	864x457x81
WS4159S.100.TBU	1000	964x457x81



VENKA 2.0 LEATHER SHOES RACK  
梵卡 2.0 轻奢皮革鞋架



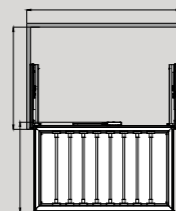
MODEL 型号	CABINET 柜体 W (mm)	WIDTH x DEPTH x HEIGHT (mm) 宽 x 深 x 高 (mm) . 含导轨
WS4160S.060.TBU	600	564x457x86
WS4160S.070.TBU	700	664x457x86
WS4160S.080.TBU	800	764x457x86
WS4160S.090.TBU	900	864x457x86
WS4160S.100.TBU	1000	964x457x86





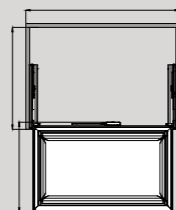
**VENKA 2.0 LEATHER TROUSERS RACK**  
梵卡 2.0 轻奢皮革裤架

MODEL 型号	CABINET 柜体 W (mm)	WIDTH x DEPTH x HEIGHT (mm) 宽 x 深 x 高 (mm) . 含导轨
WS4161S.060.TBU	600	564x457x81
WS4161S.070.TBU	700	664x457x81
WS4161S.080.TBU	800	764x457x81
WS4161S.090.TBU	900	864x457x81
WS4161S.100.TBU	1000	964x457x81



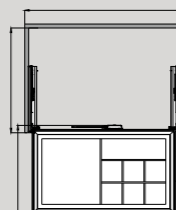
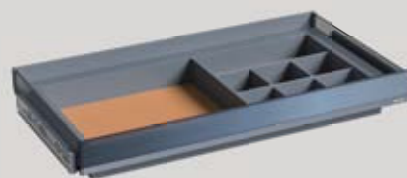
**VENKA 2.0 LEATHER STORAGE BAG**  
梵卡 2.0 轻奢皮革收纳篮

MODEL 型号	CABINET 柜体 W (mm)	WIDTH x DEPTH x HEIGHT (mm) 宽 x 深 x 高 (mm) . 含导轨
WS4162S.060.TBU	600	564x457x212
WS4162S.070.TBU	700	664x457x212
WS4162S.080.TBU	800	764x457x212
WS4162S.090.TBU	900	864x457x212
WS4162S.100.TBU	1000	964x457x212



**VENKA 2.0 LEATHER UNDERWARE STORAGE BOX**  
梵卡 2.0 轻奢皮革内衣收纳

MODEL 型号	CABINET 柜体 W (mm)	WIDTH x DEPTH x HEIGHT (mm) 宽 x 深 x 高 (mm) . 含导轨
WS4166S.060.TBU	600	564x457x121
WS4166S.070.TBU	700	664x457x121
WS4166S.080.TBU	800	764x457x121
WS4166S.090.TBU	900	864x457x121
WS4166S.100.TBU	1000	964x457x121

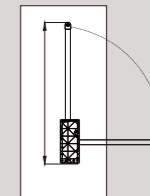
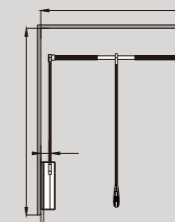


**VICTORA 2.0**  
维多拉 2.0 双缓冲下拉衣架 - 静谧蓝

NEW



MODEL 型号	CABINET 柜体 W (mm)	MATERIAL 材料
WS2105S.SL.TBU	550-670	铝合金
WS2105S.ML.TBU	650-920	铝合金
WS2105S.LL.TBU	880-1270	铝合金

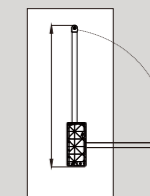
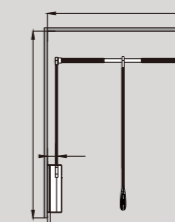


**VICTORA 2.0**  
维多拉 2.0 双缓冲下拉衣架 - 摩卡

NEW



MODEL 型号	CABINET 柜体 W (mm)	MATERIAL 材料
WS2105S.SL.MCA	550-670	铝合金
WS2105S.ML.MCA	650-920	铝合金
WS2105S.LL.MCA	880-1270	铝合金



G



**GLASS NAKA** STORAGE SYSTEM

玻璃拿铁衣柜收纳系统



NOBILITY IS NOT MATERIAL LUXURY, BUT A REFINED ATTITUDE TO LIFE.

高雅与实用的结合，为所有物品提供完美的收纳方式，使衣柜透出优雅气质。



GLASS NAKA COMBINES ELEGANCE WITH PRAGMATISM TO MEET ALL EXPECTATIONS OF QUALITY LIFE AND IS THE WAY WE HAVE LONG LOOKED FORWARD TO IT.

高贵不是物质的奢华，而是一种精致的生活态度。玻璃拿铁系列将优雅格调与实用主义完美融合，满足对品质生活的所有期望，是我们憧憬已久的生活方式。

## GLASS NAKA STORAGE SYSTEM



GLASS NAKA /  
Multifunctional storage box

→ 玻璃拿铁多功能装饰品盒



EXTRAORDINARY VISUAL ENJOYMENT WITH  
FUNCTIONAL AND STYLISH DESIGN, TO  
STORE THE JEWELRY PERFECTLY.

高雅时尚，非一般的视觉享受。丰富的收纳功能，足够  
您收纳一切所需物品，兼顾了实用性和舒适性，只将最  
美好的一面展现给你。





MULTI-FUNCTIONAL AND CABINET-STYLED DESIGN IS UTILITY TO MAKE GOOD USE OF THE WARDROBE SPACE.  
 多功能收纳充分利用衣柜空间，入柜式设计，低调又不失奢华，达到一种极致生活体验。

GLASS NAKA /  
 Pvc rattan storage basket

→ 玻璃拿铁 PVC 藤条收纳篮

GLASS NAKA /  
 Board type storage box

→ 玻璃拿铁板式浅平收纳篮



GLASS NAKA /  
Simple style trousers rack

→ 玻璃拿铁简约式裤架



THE TROUSERS RACK WITH ANTI-SLIP  
DESIGN, KEEP THE PANTS ORDERLY AND  
MAKE IT EASY FOR TAKING.

分隔裤架设计，不仅扩大收纳空间，而且拿取方便。加粗  
挂条设计，裤子不易掉落，不易起折痕，让您的裤子保持  
熨烫之后得笔直与整洁。



GLASS NAKA /  
Board type shoes rack

→ 玻璃拿铁板式鞋架





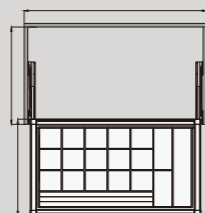
→ FEATURES / 产品特点

- Two-way soft closing, soft closing distance 53mm adjustable max +20mm  
快装、双缓冲功能专利领先优势，缓冲距离 53mm，宽度可调：+20mm
- High-strength aluminium frame+glass panel, combining with multifunctional storage boxes  
高强度钢板通用框架 + 玻璃面板，配合多种收纳功能模块
- Color: Mocca  
颜色：摩卡 (MCA)

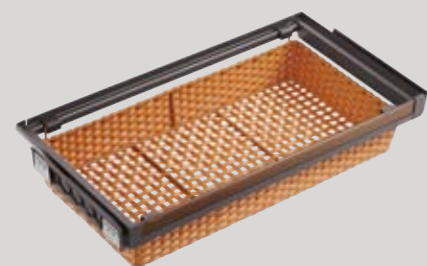
GLASS NAKA MULTIFUNCTIONAL STORAGE BOX  
玻璃拿铁多功能装饰品盒



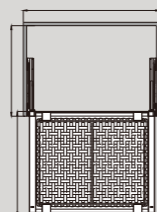
MODEL 型号	CABINET 柜体 W (mm)	WIDTH x DEPTH x HEIGHT (mm) 宽 x 深 x 高 (mm) . 含导轨
WS4140S.060G.MCA	600	564~584x443x78
WS4140S.070G.MCA	700	664~684x443x78
WS4140S.080G.MCA	800	764~784x443x78
WS4140S.090G.MCA	900	864~884x443x78
WS4140S.100G.MCA	1000	964~984x443x78



GLASS NAKA PVC RATTAN STORAGE BASKET  
玻璃拿铁 PVC 藤条收纳篮



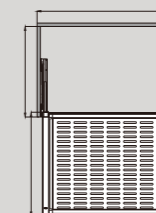
MODEL 型号	CABINET 柜体 W (mm)	WIDTH x DEPTH x HEIGHT (mm) 宽 x 深 x 高 (mm) . 含导轨
WS4141S.060G.MCA	600	564~584x443x151
WS4141S.070G.MCA	700	664~684x443x151
WS4141S.080G.MCA	800	764~784x443x151
WS4141S.090G.MCA	900	864~884x443x151
WS4141S.100G.MCA	1000	964~984x443x151



GLASS NAKA BOARD TYPE STORAGE BOX  
玻璃拿铁板式浅平收纳篮



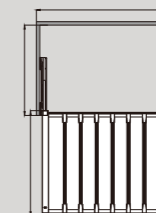
MODEL 型号	CABINET 柜体 W (mm)	WIDTH x DEPTH x HEIGHT (mm) 宽 x 深 x 高 (mm) . 含导轨
WS4142S.060G.MCA	600	564~584x443x140
WS4142S.070G.MCA	700	664~684x443x140
WS4142S.080G.MCA	800	764~784x443x140
WS4142S.090G.MCA	900	864~884x443x140
WS4142S.100G.MCA	1000	964~984x443x140



GLASS NAKA SIMPLE STYLE TROUSERS RACK  
玻璃拿铁简约式裤架



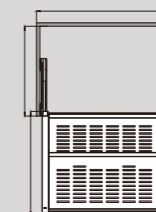
MODEL 型号	CABINET 柜体 W (mm)	WIDTH x DEPTH x HEIGHT (mm) 宽 x 深 x 高 (mm) . 含导轨
WS4143S.060G.MCA	600	564~584x443x63
WS4143S.070G.MCA	700	664~684x443x63
WS4143S.080G.MCA	800	764~784x443x63
WS4143S.090G.MCA	900	864~884x443x63
WS4143S.100G.MCA	1000	964~984x443x63



GLASS NAKA BOARD TYPE SHOES RACK  
玻璃拿铁板式鞋架



MODEL 型号	CABINET 柜体 W (mm)	WIDTH x DEPTH x HEIGHT (mm) 宽 x 深 x 高 (mm) . 含导轨
WS4144S.060G.MCA	600	564~584x443x204
WS4144S.070G.MCA	700	664~684x443x204
WS4144S.080G.MCA	800	764~784x443x204
WS4144S.090G.MCA	900	864~884x443x204
WS4144S.100G.MCA	1000	964~984x443x204



# M



## MOKA STORAGE SYSTEM

摩卡衣柜收纳系统





Wardrobe style reflects the pursuit of life.

外表精致，内心丰盛，是人们追求的人生状态。衣橱亦如此，优质的衣橱内部收纳系统，更衬托主人的衣饰品味；手到擒来的每一种搭配，使柜门后的每件衣物都让你跃跃欲穿。



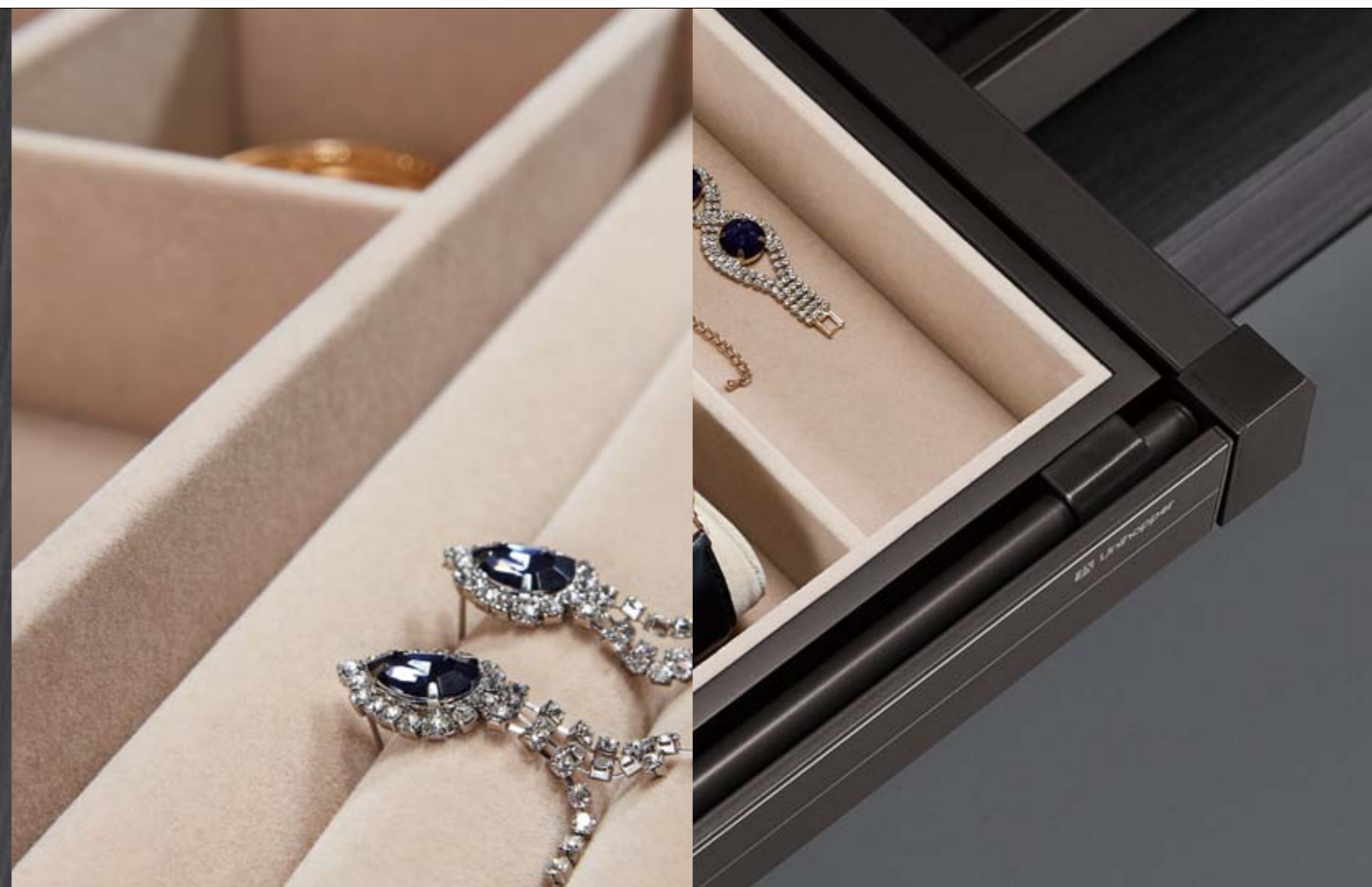
An encounter in modernity and art,  
better enjoy the sense of elegance and  
temperament.

# Premium texture with elegance.

高档质感与优雅格调完美结合

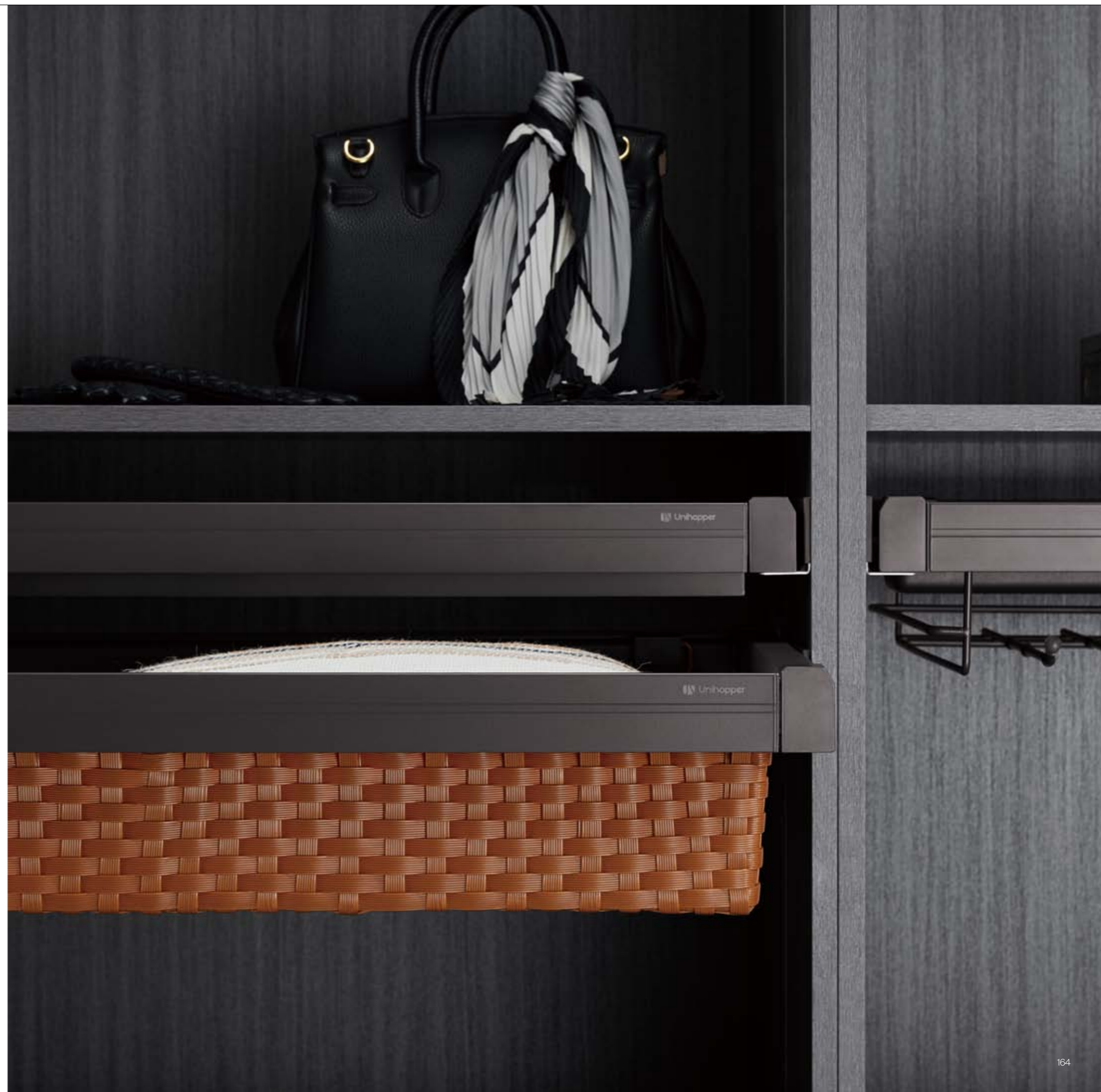


在纷繁的现代都市进行一次美丽的邂逅，在享受生活快节奏的同时，也需要体会一份优雅，品味一种气质。



MOKA /  
Multifunctional storage box

→ 多功能装饰品收纳盒



MOKA /  
Pvc rattan storage basket

→ PVC 藤条收纳篮



THE RATTAN DESIGN FOR STORAGE WITH THE STYLE FOR MINIMALIST— SIMPLE BUT LUXURY.  
深邃而不失风范的储物空间简约而不简单，奢华而不高调，领略轻奢生活美学。



MOKA /  
Flat and shallow board type  
storage basket

→ 板式浅平收纳篮



MOKA /  
Metal wire storage basket

→ 金属线收纳篮





MOKA /  
Simple trousers rack

→ 简约式裤架



MOKA /  
Board type shoes rack

→ 板式鞋架



MOKA /  
Board type shoes rack

→ 板式鞋架



MOKA /  
Glasses drawer

→ 玻璃内抽屉



THE GLASS INBUILT WITH THE VISUAL TRANSLUCENCY, TO PRESENT THE LAYERING OF STORAGE, TO TRANSLATE THE ESSENCE OF LIFE.

玻璃元素的加入，为衣柜空间更添通透。“有藏有露”呈现出收纳的层次感，藏起生活小凌乱，展露出生活高品质。



MOKA /  
Side mounted 4 layers  
shoes rack

→ 侧装四层鞋架

MOKA /  
Side mounted 4 layers  
storage rack

→ 侧装四层置物篮



MOKA /  
VICTORA

→ 维多利亚 - 双缓冲升降挂衣架

NEW



# Reach to the height

触不可及的高度由您掌控

INNOVATIVE DESIGN OF LIFTING—TO PASS ON THE CONSIDERATION AND CONVENIENCE!

打破传统设计，创造人文收纳。人性的关怀和体贴的升降功能，轻松化解高处取物的烦恼，真正做到体贴入微。





MOKA /  
Soft closing wardrobe lift

→ 缓冲升降挂衣架

SOFT CLOSING LIFTING, TO REACH OF THE HEIGHT, TO CREATE TASTEFUL LIFE!  
阻尼升降设计，触不可及的高度由您掌控，充分发挥高柜空间作用，为您打造品质生活。



MOKA CLOTHES HANGER OFFERING THE BEST WARDROBE EXPERIENCE FOR YOU! TOP-MOUNTED DESIGN FOR QUICK ASSEMBLE, ORDERLY STORAGE FOR QUALITY LIFE.

专属衣柜挂衣杆，让您对所有衣物一目了然，轻松高效地收纳，体验生活的最高舒适状态。顶部安装设计，安装方便快捷。

MOKA /  
Ballet

→ 空中芭蕾挂衣杆



MOKA /  
Clothes hanger

→ 顶装时尚挂衣杆



MOKA /  
Clothes hanger

→ 顶装时尚挂衣杆





MOKA /  
Clothes hanger

→ 顶装时尚挂衣杆



MOKA /  
Clothes hanger

→ 侧装时尚挂衣杆

THE MOKA CLOTHES HANGER PERFECTLY MATCHES FOR THE WARDROBE STORAGE, ORDERLY AND STYLISH.

美得恰到好处，一根衣杆让衣柜提升一个档次，在保证衣物收纳井井有条的同时，且不乏时尚格调，打造有条不紊的精致生活，让每件衣服如艺术品般呈现。

LIFE AS A MIRROR! BEING AN ELEGANT LADY, THE MOKA SOFT CLOSING ROTATED MIRROR OFFERING THE BEST REFERENCE.

在有限的空间内，提供功能和美感兼备的解决方案。贴心的镜面饰品收纳盒，让你时刻做精致女人。

MOKA /  
Soft closing rotated mirror

→ 缓冲旋转穿衣镜



MOKA /  
Soft closing rotated mirror

→ 简约带灯缓冲旋转穿衣镜

MOKA /  
Pt rotating mirror

→ 畅销款衣柜推拉镜





SPACE-SAVING AND PRACTICAL DESIGN TO ACHIEVE THE FUNCTIONS OF SOFT CLOSING AND EASY FOR TAKING!  
 节约空间和适用性是好产品的基石，阻尼推拉设计，推拉顺畅，存取方便，充分释放更多功能空间。

MOKA /  
 Soft closing top mounting  
 clothes hanger

→ 缓冲顶装挂衣架

MOKA /  
 Soft closing side mounted  
 tie rack

→ 缓冲侧装领带架



Waltz perfectly solves the full use of corner space, 360 degree rotating brings you good experience for collection and dressing up.

旋转中的智慧收纳

# WARDROBE IN DANCING

科学收纳，为美定制，升级衣帽间转角功能，360°自由旋转加持，美貌与实力兼具得硬核王者，让出门洒脱又精致。



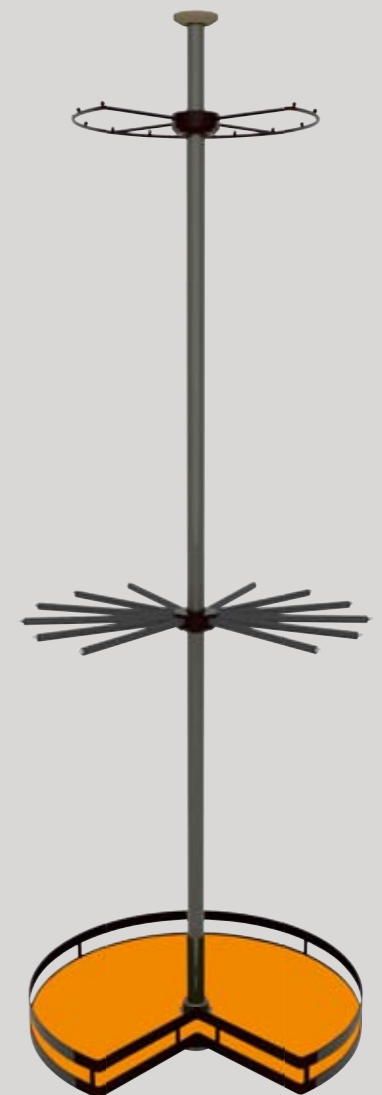


MOKA /  
3 layers of rotating basket

→ 三层旋转衣物篮

WITH MINIMALIST AND PRACTICAL DESIGN,  
IT PROVIDES A VARIETY OF SPACE WITH  
MULTIFUNCTIONAL STORAGE, REALIZING THE  
FREEDOM FROM STATIC TO DYNAMIC.

以极简有型美观实用的收纳设计，为衣柜收纳提供更大的空间，更多的想象。多重收纳的应用组合，让家居空间实现了，从静态到动态的灵活切换。



HIGH END MOCCA FINISHING RELEASES HIGH QUALITY FEELING, 360 DEGREE ROTATING DESIGN HELPS YOU PICK OUT AND COLLECT SHOES EASILY.

高端铂铂金，尽显高贵质感。360° 全方位转入式设计，一转之间，鞋子的取放与挑选变得轻松简易，优雅从容。





MOKA /  
360 degree rotating shoe rack

→ 360 度缓冲旋转鞋架



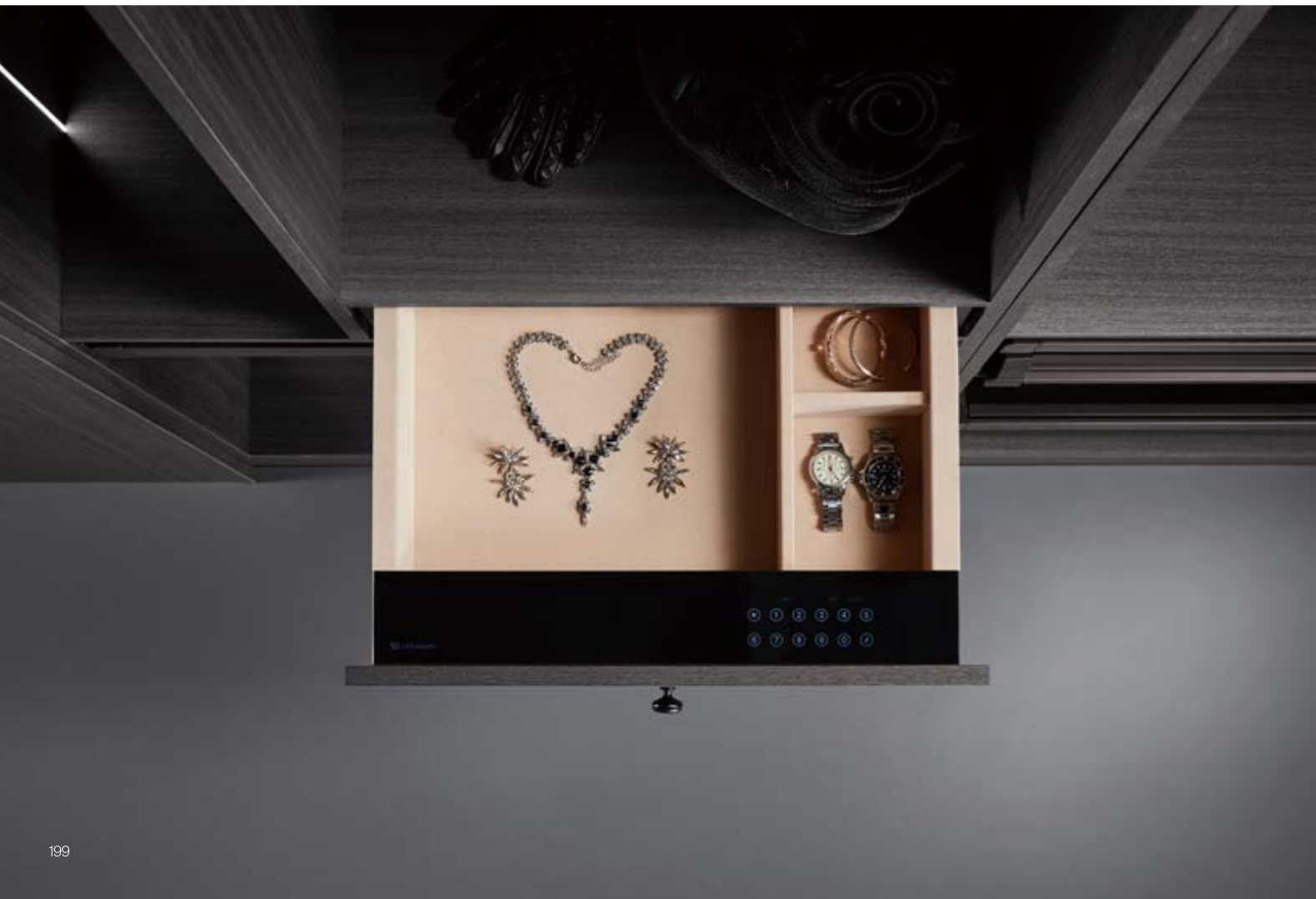
LOCKBOX WITH THE DOUBLE-SAFETY DESIGN OF PASSWORD AND FINGERPRINTING, INCREASING THE INTELLIGENT SECURITY FOR THE CHERISHED STUFFS.

隐藏在衣柜里的保险箱，触屏密码开关，智能防护，安全指数高，令生活的安心度大幅提升，守护您的珍贵物品。



MOKA /  
Lockbox

→ 密码箱



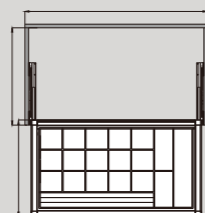


## → FEATURES / 产品特点

- Two-way soft closing, soft closing distance 53mm, adjustable max +46mm  
全球唯一快装、双缓冲功能专利领先优势，缓冲距离53mm，宽度可调：+40mm
- High-strength aluminium frame, combining with multifunctional storage boxes  
高强度铝合金通用框架，配合多种收纳功能模块
- Color: Mocca/white  
(<sup>^</sup>) 颜色：摩卡 (MCA)/ 时尚白 (WT)

MULTIFUNCTIONAL STORAGE BOX  
多功能装饰品收纳盒

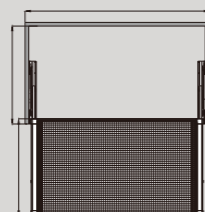
MODEL 型号	CABINET 柜体 W (mm)	WIDTH x DEPTH x HEIGHT (mm) 宽 x 深 x 高 (mm) . 含导轨
WS4117S.060. <sup>(^)</sup>	600	564~594x443x78
WS4117S.070. <sup>(^)</sup>	700	664~694x443x78
WS4117S.080. <sup>(^)</sup>	800	764~794x443x78
WS4117S.090. <sup>(^)</sup>	900	864~894x443x78
WS4117S.100. <sup>(^)</sup>	1000	964~994x443x78



产品介绍

PVC RATTAN STORAGE BASKET  
PVC 藤条收纳篮

MODEL 型号	CABINET 柜体 W (mm)	WIDTH x DEPTH x HEIGHT (mm) 宽 x 深 x 高 (mm) . 含导轨
WS4119S.060. <sup>(^)</sup>	600	564~594x443x170
WS4119S.070. <sup>(^)</sup>	700	664~694x443x170
WS4119S.080. <sup>(^)</sup>	800	764~794x443x170
WS4119S.090. <sup>(^)</sup>	900	864~894x443x170
WS4119S.100. <sup>(^)</sup>	1000	964~994x443x170

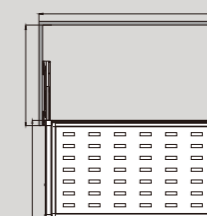
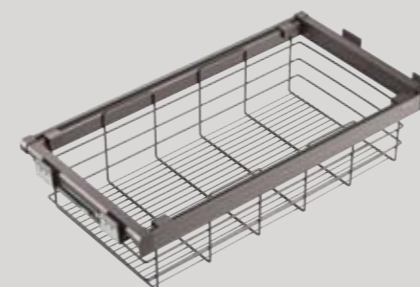


产品介绍

FLAT AND SHALLOW BOARD TYPE STORAGE BASKET  
板式浅平收纳篮

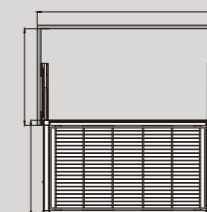
产品介绍

MODEL 型号	CABINET 柜体 W (mm)	WIDTH x DEPTH x HEIGHT (mm) 宽 x 深 x 高 (mm) . 含导轨
WS4120S.060A. <sup>(^)</sup>	600	564~594x443x90
WS4120S.060B. <sup>(^)</sup>	600	564~594x443x135
WS4120S.070A. <sup>(^)</sup>	700	664~694x443x90
WS4120S.070B. <sup>(^)</sup>	700	664~694x443x135
WS4120S.080A. <sup>(^)</sup>	800	764~794x443x90
WS4120S.080B. <sup>(^)</sup>	800	764~794x443x135
WS4120S.090A. <sup>(^)</sup>	900	864~894x443x90
WS4120S.090B. <sup>(^)</sup>	900	864~894x443x135
WS4120S.100A. <sup>(^)</sup>	1000	964~994x443x90
WS4120S.100B. <sup>(^)</sup>	1000	964~994x443x135

METAL WIRE STORAGE BASKET  
金属线收纳篮

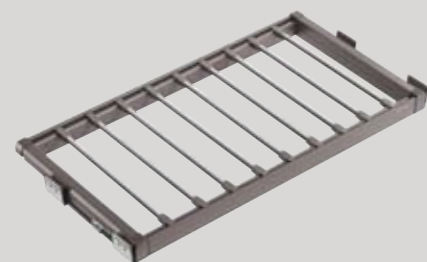
产品介绍

MODEL 型号	CABINET 柜体 W (mm)	WIDTH x DEPTH x HEIGHT (mm) 宽 x 深 x 高 (mm) . 含导轨
WS4121S.060A. <sup>(^)</sup>	600	564~594x443x130
WS4121S.060B. <sup>(^)</sup>	600	564~594x443x210
WS4121S.070A. <sup>(^)</sup>	700	664~694x443x130
WS4121S.070B. <sup>(^)</sup>	700	664~694x443x210
WS4121S.080A. <sup>(^)</sup>	800	764~794x443x130
WS4121S.080B. <sup>(^)</sup>	800	764~794x443x210
WS4121S.090A. <sup>(^)</sup>	900	864~894x443x130
WS4121S.090B. <sup>(^)</sup>	900	864~894x443x210
WS4121S.100A. <sup>(^)</sup>	1000	964~994x443x130
WS4121S.100B. <sup>(^)</sup>	1000	964~994x443x210

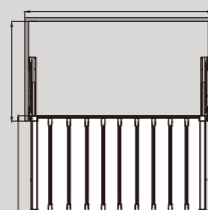




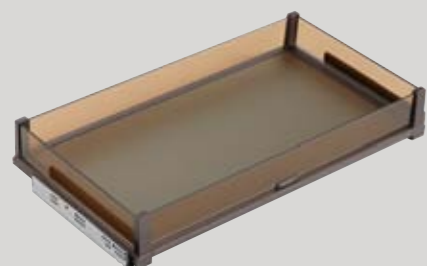
**SIMPLE TROUSERS RACK**  
简约式裤架



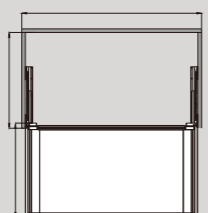
MODEL 型号	CABINET 柜体 W (mm)	WIDTH x DEPTH x HEIGHT (mm) 宽 x 深 x 高 (mm) . 含导轨
WS4122S.060.(^)	600	564~594x443x60
WS4122S.070.(^)	700	664~694x443x60
WS4122S.080.(^)	800	764~794x443x60
WS4122S.090.(^)	900	864~894x443x60
WS4122S.100.(^)	1000	964~994x443x60



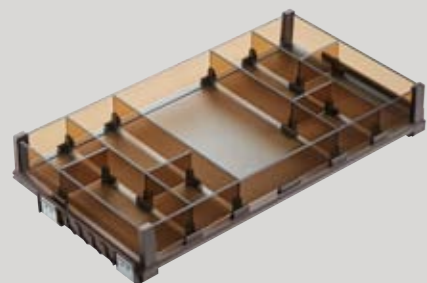
**GLASSES DRAWER**  
玻璃内抽屉

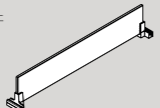
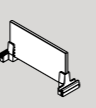


MODEL 型号	CABINET 柜体 W (mm)	WIDTH x DEPTH x HEIGHT (mm) 宽 x 深 x 高 (mm) . 含导轨
WS4128S.045.(^)	450	414x448x130
WS4128S.050.(^)	500	464x448x130
WS4128S.060.(^)	600	564x448x130
WS4128S.070.(^)	700	664x448x130
WS4128S.080.(^)	800	764x448x130
WS4128S.090.(^)	900	864x448x130


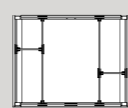
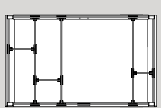
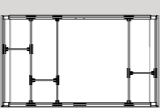
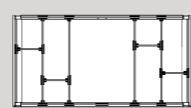


**GLASS DIVIDER SYSTEM**  
玻璃内分隔系统



纵向玻璃分隔组件 	横向玻璃分隔组件 
WS4128B1.412.(^)	WS4128B1.120.(^)

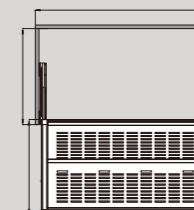
备注 :(^): 颜色 : 磨砂 (GB)/ 透明 (TR)/ 茶色 (BR)

450mm 柜体宽 	600mm 柜体宽 
订货号 WS4128E.045.(^)	订货号 WS4128E.060.(^)
700mm 柜体宽 	800mm 柜体宽 
订货号 WS4128E.070.(^)	订货号 WS4128E.080.(^)
	900mm 柜体宽 
	订货号 WS4128E.090.(^)

**BOARD TYPE SHOES RACK**  
板式鞋架



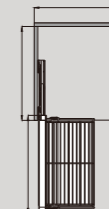
MODEL 型号	CABINET 柜体 W (mm)	WIDTH x DEPTH x HEIGHT (mm) 宽 x 深 x 高 (mm) . 含导轨
WS4126S.060.(^)	600	564~594x443x210
WS4126S.070.(^)	700	664~694x443x210
WS4126S.080.(^)	800	764~794x443x210
WS4126S.090.(^)	900	864~894x443x210
WS4126S.100.(^)	1000	964~994x443x210



**SIDE MOUNTED 4 LAYERS STORAGE RACK**  
侧装四层置物篮



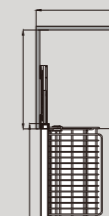
MODEL 型号	CABINET 柜体 W (mm)	WIDTH x DEPTH x HEIGHT (mm) 宽 x 深 x 高 (mm) . 含导轨
WS4515RS.305.(^)	400	305x460x870
WS4515LS.305.(^)	400	305x460x870



**SIDE MOUNTED 4 LAYERS SHOES RACK**  
侧装四层鞋架



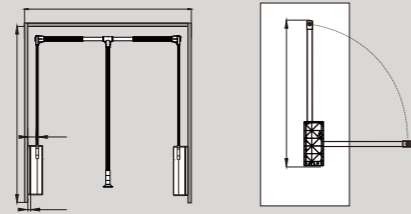
MODEL 型号	CABINET 柜体 W (mm)	WIDTH x DEPTH x HEIGHT (mm) 宽 x 深 x 高 (mm) . 含导轨
WS4514RS.305.(^)	400	305x460x870
WS4514LS.305.(^)	400	305x460x870





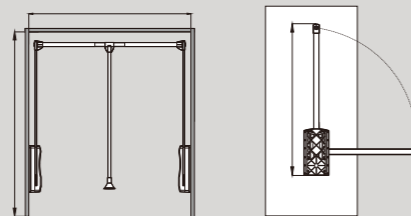
**VICTORA**  
维多拉 - 双缓冲升降挂衣架

MODEL 型号	CABINET 柜内宽 W (mm)	MATERIAL 材料
WS2105S.S.MCA	550~670	铝合金
WS2105S.M.MCA	650~920	铝合金
WS2105S.L.MCA	880~1270	铝合金



**SOFT CLOSING WARDROBE LIFT**  
缓冲升降挂衣架

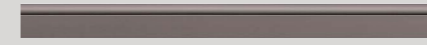
MODEL 型号	CABINET 柜内宽 W (mm)	MATERIAL 材料
WS2101S.060.(A)	550~670	铝合金
WS2101S.083.(A)	650~920	铝合金
WS2101S.115.(A)	880~1270	铝合金
WS2201S.060.(A)	550~670	铁
WS2201S.083.(A)	650~920	铁
WS2201S.115.(A)	880~1270	铁



**BALLET**  
空中芭蕾挂衣杆



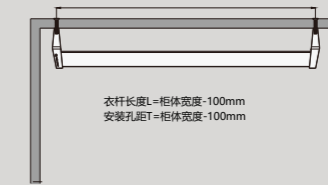
顶侧装通用衣托      三通转角衣托



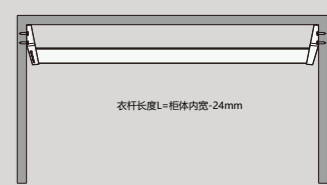
衣通



MODEL 型号	DESCRIBE 描述	LENGTH (mm) 长度
TS1409.014.MCA	顶侧装通用衣托	
TS1410.014.MCA	三通转角衣托	
AP2264.MCA	衣通	≤3000



衣杆长度L=柜体宽度-100mm  
安装孔距T=柜体宽度-100mm



衣杆长度L=柜体内宽-24mm

**CLOTHES HANGER**  
侧装时尚挂衣杆



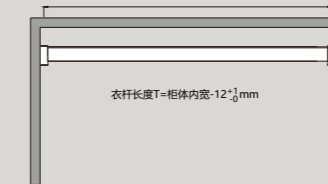
侧装衣托



衣通



MODEL 型号	DESCRIBE 描述	LENGTH (mm) 长度
TS1403.012.(A)	侧装衣托	
AP2175.(A)	衣通	≤3000



衣杆长度T=柜体内宽-12\*1/2mm

**CLOTHES HANGER**  
顶装时尚挂衣杆



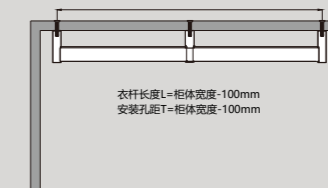
端部衣托      中部衣托      转角衣托



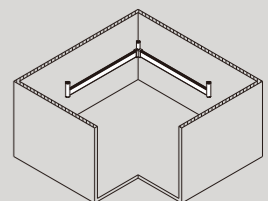
衣通



MODEL 型号	DESCRIBE 描述	LENGTH (mm) 长度
TS1401.012.(A)	端部衣托	
TS1402.012.(A)	中部衣托	
TS1404.012.(A)	转角衣托	
AP2175.(A)	衣通	≤3000



衣杆长度L=柜体宽度-100mm  
安装孔距T=柜体宽度-100mm

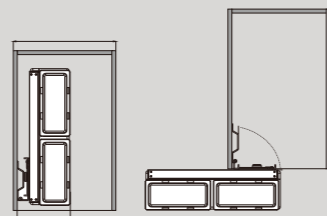




**SOFT CLOSING ROTATED MIRROR**  
缓冲旋转穿衣镜



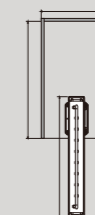
MODEL 型号	CABINET 柜体 W (mm)	WIDTH x DEPTH x HEIGHT (mm) 宽 x 深 x 高 (mm) . 含导轨
WS3103S.170.(^)	≥ 300	170x415x1130



**SOFT CLOSING TOP MOUNTING CLOTHES HANGER**  
缓冲顶装挂衣架



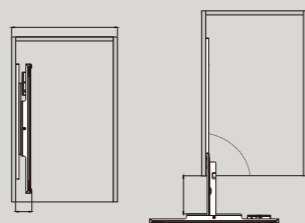
MODEL 型号	CABINET 柜体 W (mm)	WIDTH x DEPTH x HEIGHT (mm) 宽 x 深 x 高 (mm) . 含导轨
WS4307S.(^)	250	85x445x160



**SOFT CLOSING ROTATED MIRROR**  
简约带灯缓冲推拉镜



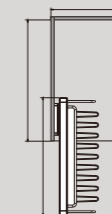
MODEL 型号	CABINET 柜体 W (mm)	WIDTH x DEPTH x HEIGHT (mm) 宽 x 深 x 高 (mm) . 含导轨
WS3104S1.020.(^)	≥ 300	52x423x1040



**SOFT CLOSING SIDE MOUNTED TIE RACK**  
缓冲侧装领带架



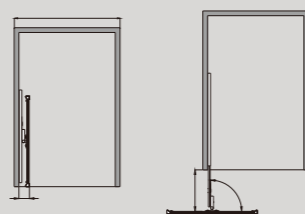
MODEL 型号	CABINET 柜体 W (mm)	WIDTH x DEPTH x HEIGHT (mm) 宽 x 深 x 高 (mm) . 含导轨
WS4310S.(^)	250	170x445x85



**PT ROTATING MIRROR**  
畅销款推拉镜



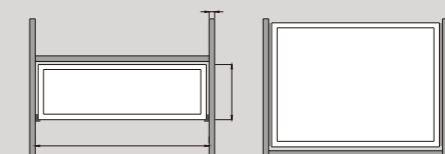
MODEL 型号	CABINET 柜体 W (mm)	WIDTH x DEPTH x HEIGHT (mm) 宽 x 深 x 高 (mm) . 含导轨
WS3105.020.MCA	≥ 300	40x340x1000



**LOCKBOX**  
密码箱



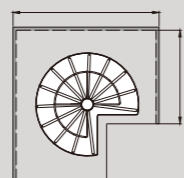
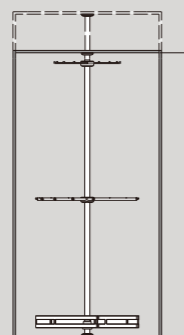
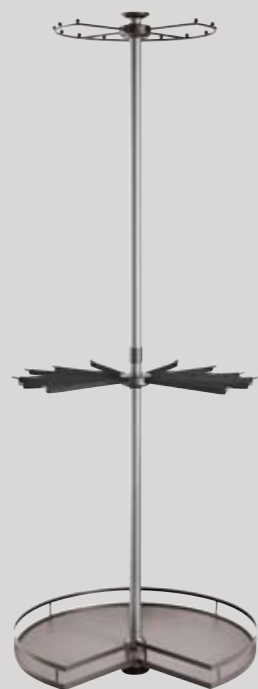
MODEL 型号	CABINET 柜体 W (mm)	WIDTH x DEPTH x HEIGHT (mm) 宽 x 深 x 高 (mm) . 含导轨
WS4138.(^)	600	564x400x150



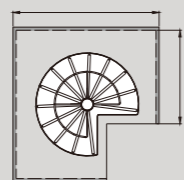
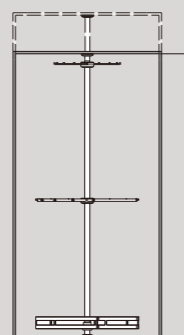


**3 LAYERS OF ROTATING BASKET**  
三层旋转衣物篮

MODEL 型号	CABINET 柜体 W (mm)	WIDTH x DEPTH x HEIGHT (mm) 宽 x 深 x 高 (mm) . 含导轨	DESCRIBE 描述
WS4152.MCA	800	700x700x1900-2100	整套

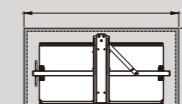
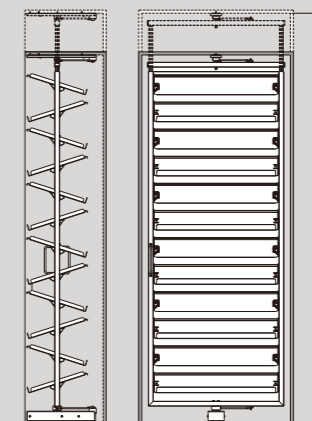


MODEL 型号	CABINET 柜体 W (mm)	WIDTH x DEPTH x HEIGHT (mm) 宽 x 深 x 高 (mm) . 含导轨	DESCRIBE 描述
WS4152.080L.MCA	800	700x700x1900-2100	整套
WS4152.BYW		700x700	皮垫

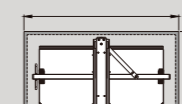
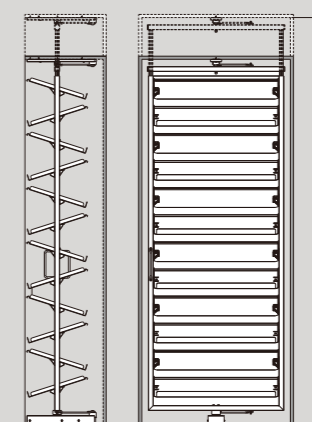
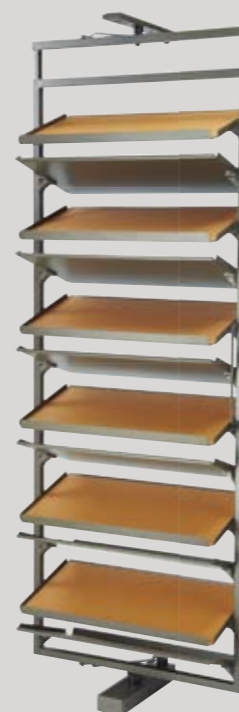


**360 DEGREE ROTATING SHOE RACK**  
360 度缓冲旋转鞋架

MODEL 型号	CABINET 柜体 W (mm)	WIDTH x DEPTH x HEIGHT (mm) 宽 x 深 x 高 (mm) . 含导轨	DESCRIBE 描述
WS4518S.080K.MCA	800	710x365x1920-2210	12 层
WS4518S.080G.MCA	800	710x365x1360-1650	8 层



MODEL 型号	CABINET 柜体 W (mm)	WIDTH x DEPTH x HEIGHT (mm) 宽 x 深 x 高 (mm) . 含导轨	DESCRIBE 描述
WS4518S.080KL.MCA	800	710x365x1920-2210	12 层 / 整套
WS4518S.080GL.MCA	800	710x365x1360-1650	8 层 / 整套
WS4518.BYW		638x300	皮垫 X1





# LEGO STORAGE SYSTEM

乐高开放衣柜收纳系统

# LEGO WARDROBE

乐高开放收纳系统



衣柜 书柜多场景应用  
SAME FRAME FOR WARDROBE  
LIVING ROOM





**原创简约造型设计**

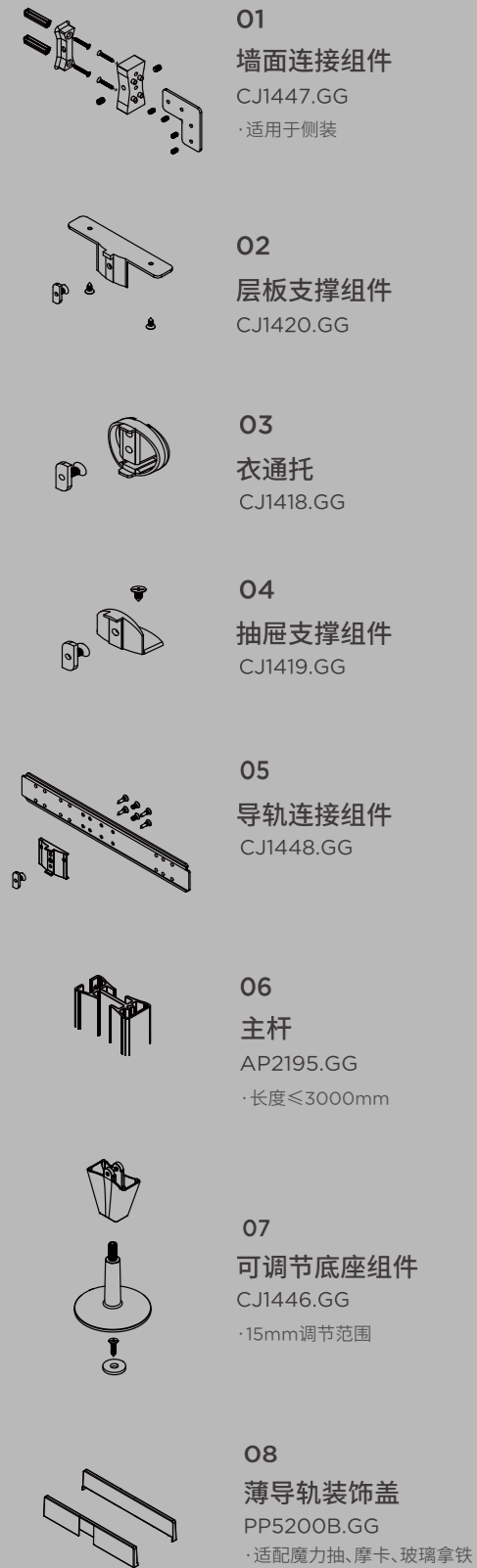
可灵活自主DIY搭配,多场景应用

**多种安装方式**  
顶装/侧装,适配性更高

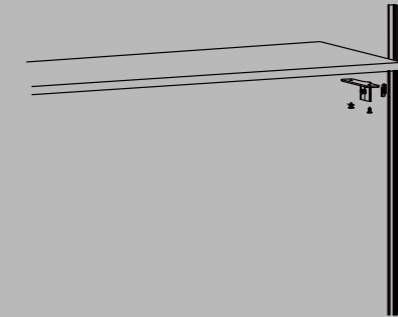
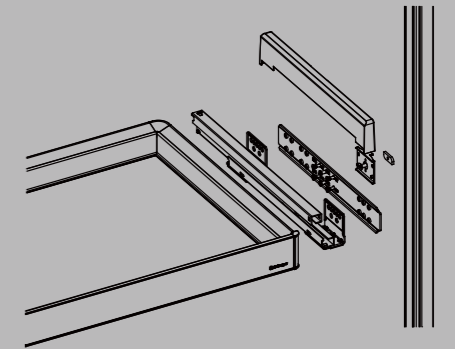
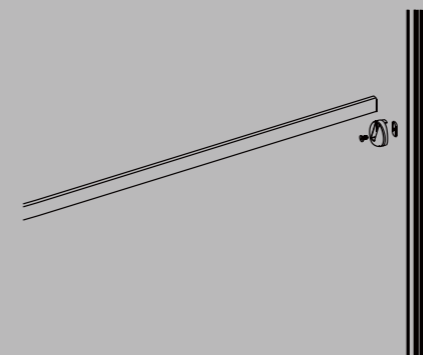


开放书柜应用

## COMPONENTS / 组件图



## INSTALLATION INSTRUCTION / 安装示意图

01. 层板  
FLAT SHELF02. 衣柜收纳五金  
WARDROBE ACCESSORIES03. 侧装挂衣杆  
SIDE MOUNTED HANGING TUBE04. 整装柜  
INDIVIDUAL DRAWER